

Product datasheet for PH308689

RAI14 (NM_015577) Human Mass Spec Standard

Product data:

Product Type:	Mass Spec Standards
Description:	RAI14 MS Standard C13 and N15-labeled recombinant protein (NP_056392)
Species:	Human
Expression Host:	HEK293
Expression cDNA Clone or AA Sequence:	RC208689
Predicted MW:	110.1 kDa
Protein Sequence:	>RC208689 protein sequence Red=Cloning site Green=Tags(s)

MKSLKAKFRKSDTNEWNKNDRLQLAVENGDAEKVASLLGKKGASATKHDSEGKTAFLHAAAKGHVECLR
VMITHGVDVTAQDTTGHSALHLAAKNSHHECIRKLLQSKCPAESVDSSGKTALHYAAAQGCLQAVQILCE
HKSPINLKDLDGNIPLLLAVQNGHSEICHFLLDHGADVNSRNKSGRTALMLACEIGSSNAVEALIKKGAD
LNLVDSLGYNALHYSKLSENAGIQSLLLKISQDADLKTPKPKQHDQVSKISSERSGTPKPKRAPPPI
SPTQLSDVSSPRITSTPLSGKESVFFAEPPFKAEISSIRENKDRLSDSTTGADSLDISSEADQDQLLS
LLQAKVASLTLHNKELQDKLQAKSPKEAEADLSDSYHSTQDGLGPSLGKPGETSPDSSPSVLIHSL
GKSTTDNDVRIQQLQEILQDLQKRLESSEAEKQLQVELQSRRAELVCLNNTIESENSDLSQKLKETQS
KYEEAMKEVLSVQKQMKLGLVSPESMDNYSHFHEL RVTEEEINVLKQDLQNAL EESERNKEKVRLEEKL
VEREKGTVIKPPVEEYEMKSSYCSVIENMNKEKAFLEKYQEAQEEIMKLDLTKSQMTQEASDEAEDM
KEAMNRMIDELNKQVSELSQLYKEAQAELEDYRKRKSL EDVTAEYIHKAEHEKLMQLTNVSRKAEDALS
EMKSQYSKVLNLTQLKQLVDAQKENSVSITEHLQVITTLRTAAKEMEEKISNLKEHLASKEVEVAKLEK
QLLEEKAAMTDAMVPRSSYEKLSSESEVSVLASKLKEVKEKEKVHSEVVQIRSEVSQVKREKENIQT
LLKSKEQEVNELLQKFQQAQEELAEKRYSESSKLEEDKDKKINEMSKVTKLKEALNSLSQLSYSTSS
SKRQSQLEALQQQVKQLQNQLAECKKQHQEVISVYRMHLLYAVQGQMDQVQVVKQILTMCKNQSQKK

TRTRPLEQKLI SEEDLAANDILDYKDDDDKV

Tag:	C-Myc/DDK
Purity:	> 80% as determined by SDS-PAGE and Coomassie blue staining
Concentration:	>0.05 µg/µL as determined by microplate BCA method
Labeling Method:	Labeled with [U- ¹³ C ₆ , ¹⁵ N ₄]-L-Arginine and [U- ¹³ C ₆ , ¹⁵ N ₂]-L-Lysine
Buffer:	25 mM Tris-HCl, 100 mM glycine, pH 7.3
Storage:	Store at -80°C. Avoid repeated freeze-thaw cycles.
Stability:	Stable for 3 months from receipt of products under proper storage and handling conditions.



[View online »](#)

RefSeq: [NP_056392](#)

RefSeq Size: 5010

RefSeq ORF: 2940

Synonyms: NORPEG; RAI13

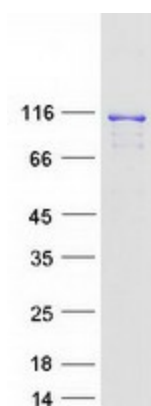
Locus ID: 26064

UniProt ID: [Q9P0K7](#)

Cytogenetics: 5p13.2

Summary: Plays a role in actin regulation at the ectoplasmic specialization, a type of cell junction specific to testis. Important for establishment of sperm polarity and normal spermatid adhesion. May also promote integrity of Sertoli cell tight junctions at the blood-testis barrier.
[UniProtKB/Swiss-Prot Function]

Product images:



Coomassie blue staining of purified RAI14 protein (Cat# [TP308689]). The protein was produced from HEK293T cells transfected with RAI14 cDNA clone (Cat# [RC208689]) using MegaTran 2.0 (Cat# [TT210002]).