

## Product datasheet for PH308675

### BYSL (NM\_004053) Human Mass Spec Standard

#### Product data:

Product Type:	Mass Spec Standards
Description:	BYSL MS Standard C13 and N15-labeled recombinant protein (NP_004044)
Species:	Human
Expression Host:	HEK293
Expression cDNA Clone or AA Sequence:	RC208675
Predicted MW:	49.6 kDa
Protein Sequence:	>RC208675 protein sequence Red=Cloning site Green=Tags(s)
	MPKFKAARGVGGQEKHAPLADQILAGNAVRAGVREKRRGRGTGEAEEYVGPRLSRRILQQARQQELEE AEHGTGDKPAAPRERTTRLGPRMPQDGSDEDEEWPTLEKAATMTAAGHAEVVVDPEDERAIEMFMNKN PPARRTLADIIMEKLTEKQTEVETVMSEVSGFPMPQLDPRVLEVYRGVREVL SKYRSGKLPKAFKIIPAL SNWEQILYVTEPEAWTAAAMYQATRIFASNLKERMAQRFYNLVLLPRVRDDVAEYKRLNFHLYMALKKAL FKPGAWFKGIL IPLCESGTCTLREAIIVGSIITKCSIPVLHSSAAMLKIAEMEYSGANSIFLRLLLDKKY ALPYRVL DALVFHFLGRTEKRELPVLWHQCLLTLVQRYKADLATDQKEALLELLRLQPHPQLSPEIRRE LQSAVPRDVEDVPITVE
	TRTRPLEQKLI SEEDLAANDILDYKDDDDKV
Tag:	C-Myc/DDK
Purity:	> 80% as determined by SDS-PAGE and Coomassie blue staining
Concentration:	>0.05 µg/µL as determined by microplate BCA method
Labeling Method:	Labeled with [U- 13C6, 15N4]-L-Arginine and [U- 13C6, 15N2]-L-Lysine
Buffer:	25 mM Tris-HCl, 100 mM glycine, pH 7.3
Storage:	Store at -80°C. Avoid repeated freeze-thaw cycles.
Stability:	Stable for 3 months from receipt of products under proper storage and handling conditions.
RefSeq:	<u>NP_004044</u>
RefSeq Size:	2005
RefSeq ORF:	1311
Synonyms:	BYSTIN; Enp1



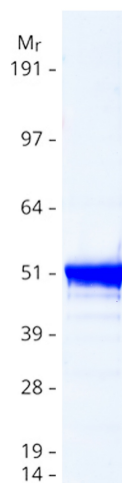
[View online »](#)

Locus ID: 705  
UniProt ID: [Q13895](#)  
Cytogenetics: 6p21.1

**Summary:** Bystin is expressed as a 2-kb major transcript and a 3.6-kb minor transcript in SNG-M cells and in human trophoblastic teratocarcinoma HT-H cells. Protein binding assays determined that bystin binds directly to trophinin and tastin, and that binding is enhanced when cytokeratins 8 and 18 are present. Immunocytochemistry of HT-H cells showed that bystin colocalizes with trophinin, tastin, and the cytokeratins, suggesting that these molecules form a complex in trophoctoderm cells at the time of implantation. Using immunohistochemistry it was determined that trophinin and bystin are found in the placenta from the sixth week of pregnancy. Both proteins were localized in the cytoplasm of the syncytiotrophoblast in the chorionic villi and in endometrial decidual cells at the uteroplacental interface. After week 10, the levels of trophinin, tastin, and bystin decreased and then disappeared from placental villi. [provided by RefSeq, Jul 2008]

**Protein Families:** Stem cell - Pluripotency

### Product images:



Coomassie blue staining of purified BYSL protein (Cat# [TP308675]). The protein was produced from HEK293T cells transfected with BYSL cDNA clone (Cat# [RC208675]) using MegaTran 2.0 (Cat# [TT210002]).