

Product datasheet for PH308660

MTMR14 (NM_001077526) Human Mass Spec Standard

Product data:

Product Type:	Mass Spec Standards
Description:	MTMR14 MS Standard C13 and N15-labeled recombinant protein (NP_001070994)
Species:	Human
Expression Host:	HEK293
Expression cDNA Clone or AA Sequence:	RC208660
Predicted MW:	66.7 kDa
Protein Sequence:	>RC208660 protein sequence Red=Cloning site Green=Tags(s)

MAGARAAAAAASAGSSASSGNQPPQELGLGELLEEF SRTQYRAKDGSGTGGSKVERIEKRCLLELFGRDYC
FSVIPNTNGD ICGHYPRHIVFLEYESSEKEKDTFESTVQVSKLQDLIHRSKMARCGRFVCPVILFKGKH
ICRSATLAGWGELYGRSGYNYFFSGGADDAWADVTEEDCALRSGDTHLFDKVRGYDIKLLRYLSVKY
ICDLMVENKKVKFGMNVTSSEKVDKAQRYADFTLLSIPYPGCEFFKEYKDRDYMAEGLIFNWKQDYVDAP
LSIPDFLTHSLNIDWSQYQCWDLVQQTQNYLKL LLSLVNSDDDSGLLVHCISGWDRTPLFISLLRSLWA
DGLIHTSLKPTEILYLTVAYDWFLFGHMLVDRLSKGEEIFFFCFNFLKHITSEEF SALKTQRKSLPARD
GGFTLEDICMLRRKDRGTTSLGSDFLVMESSPGATGSFTYEAVELVPAGAPTQAARWKS HSSSPQSVL
WNRQPSEDRLPSQQLAEARSSSSSSSNHSDNF FRMGSSPLEV PKPRLAALSDRETRLQEVRS AFLAAY
SSTVGLRAVAPSPSGAIGLLEQFARGVGLRSISSNAL

TRTRPLEQKLISEEDLAANDILDYKDDDDKV

Tag:	C-Myc/DDK
Purity:	> 80% as determined by SDS-PAGE and Coomassie blue staining
Concentration:	>0.05 µg/µL as determined by microplate BCA method
Labeling Method:	Labeled with [U- 13C6, 15N4]-L-Arginine and [U- 13C6, 15N2]-L-Lysine
Buffer:	25 mM Tris-HCl, 100 mM glycine, pH 7.3
Storage:	Store at -80°C. Avoid repeated freeze-thaw cycles.
Stability:	Stable for 3 months from receipt of products under proper storage and handling conditions.
RefSeq:	NP_001070994
RefSeq Size:	2380
RefSeq ORF:	1794



[View online »](#)

Synonyms: C3orf29

Locus ID: 64419

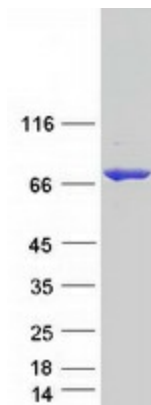
UniProt ID: [Q8NCE2](#), [Q8WYY9](#)

Cytogenetics: 3p25.3

Summary: This gene encodes a myotubularin-related protein. The encoded protein is a phosphoinositide phosphatase that specifically dephosphorylates phosphatidylinositol 3,5-biphosphate and phosphatidylinositol 3-phosphate. Mutations in this gene are correlated with autosomal dominant centronuclear myopathy. Alternate splicing results in multiple transcript variants. A pseudogene of this gene is found on chromosome 18.[provided by RefSeq, Apr 2010]

Protein Families: Druggable Genome, Phosphatase, Secreted Protein

Product images:



Coomassie blue staining of purified MTMR14 protein (Cat# [TP308660]). The protein was produced from HEK293T cells transfected with MTMR14 cDNA clone (Cat# [RC208660]) using MegaTran 2.0 (Cat# [TT210002]).