

Product datasheet for PH308654

CD31 (PECAM1) (NM_000442) Human Mass Spec Standard

Product data:

Product Type:	Mass Spec Standards
Description:	PECAM1 MS Standard C13 and N15-labeled recombinant protein (NP_000433)
Species:	Human
Expression Host:	HEK293
Expression cDNA Clone or AA Sequence:	RC208654
Predicted MW:	82.4 kDa
Protein Sequence:	>RC208654 representing NM_000442 Red=Cloning site Green=Tags(s)

MQPRWAQGATMWLGVLLTLLCSSLEGQENSFTINSVDMKSLPDWTVQNGKNTLQCFADVSTTSHVKPQ
HQMFLFYKDDVLFYNISSMKSTESYFIPEVRIYDSGTYKCTVIVNNEKTTAEYQVLVEGVSPRVTLDDK
EAIQGGIVRVNCSVPPEEKAPIHFTIEKLELNEKMVCLKREKNSRDQNFVILEFPVEEQDRVLSFRCQARI
ISGIHMQTSESTKSELVTVESFSTPKFHSPTGMIMEGAQLHIKCTIQVTHLAQEFPEIIQKDKAIVA
HNRHGNKAVYSVMAMVEHSGNYTCKVESSRISKVSSIVVNITELFSKPELESSFTHLDQGERLNLSCSIP
GAPPANFTIQKEDTIVSQTDFTKIASKSDSGTYICTAGIDKVVKKSNTVQIVVCEMLSQPRISYDAQFE
VIKQGTIEVRCEISGTLPIISYQLLKTSKVLENSTKNSNDPAVFKDNPTEDVEYQCVADNCHSHAKMLSE
VLRVKVIAPVDEVQISILSSKVVESGEDIVLQCAVNEGSGPITYKFYREKEGKPFYQMTSNATQAFWTKQ
KANKEQEGEYCTAFNRANHASSVPRSKILTVRVILAPWKKGLIAVVIGVIIALLIIAAKCYFLRKAKA
KQMPVEMSRPAVPLLNSNNEKMSDPNMEANSHYGHNDVGNHAMKPIINDNKEPLNSDVQYTEVQVSSAES
HKDLGKKDTETVYSEVRKAVPDVAVESRYSRTEGSLDGT

TRTRPLEQKLISEEDLAANDILDYKDDDDKV

Tag:	C-Myc/DDK
Purity:	> 80% as determined by SDS-PAGE and Coomassie blue staining
Concentration:	>0.05 µg/µL as determined by microplate BCA method
Labeling Method:	Labeled with [U- 13C6, 15N4]-L-Arginine and [U- 13C6, 15N2]-L-Lysine
Buffer:	25 mM Tris-HCl, 100 mM glycine, pH 7.3
Storage:	Store at -80°C. Avoid repeated freeze-thaw cycles.
Stability:	Stable for 3 months from receipt of products under proper storage and handling conditions.
RefSeq:	NP_000433



[View online »](#)

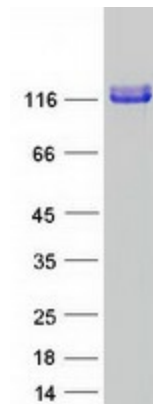
RefSeq Size:	3754
RefSeq ORF:	2214
Synonyms:	CD31; CD31/EndoCAM; endoCAM; GPIIA'; PECA1; PECAM-1
Locus ID:	5175
UniProt ID:	P16284
Cytogenetics:	17q23.3

Summary: The protein encoded by this gene is found on the surface of platelets, monocytes, neutrophils, and some types of T-cells, and makes up a large portion of endothelial cell intercellular junctions. The encoded protein is a member of the immunoglobulin superfamily and is likely involved in leukocyte migration, angiogenesis, and integrin activation. [provided by RefSeq, May 2010]

Protein Families: Druggable Genome, ES Cell Differentiation/IPS, Transmembrane

Protein Pathways: Cell adhesion molecules (CAMs), Leukocyte transendothelial migration

Product images:



Coomassie blue staining of purified PECAM1 protein (Cat# [TP308654]). The protein was produced from HEK293T cells transfected with PECAM1 cDNA clone (Cat# [RC208654]) using MegaTran 2.0 (Cat# [TT210002]).