

## Product datasheet for PH308651

### POLR1H (NM\_170783) Human Mass Spec Standard

#### Product data:

Product Type:	Mass Spec Standards
Description:	ZNRD1 MS Standard C13 and N15-labeled recombinant protein (NP_740753)
Species:	Human
Expression Host:	HEK293
Expression cDNA Clone or AA Sequence:	RC208651
Predicted MW:	13.9 kDa
Protein Sequence:	>RC208651 protein sequence Red=Cloning site Green=Tags(s)  MSVMDLANTCSSFQSDLDFCSDCGSVLPLPGAQDTVTCIRCGFNINVRDFEGKVVKTSVVFHQLGTAMPM SVEEGPECQGPVVDRRCPRCGHEGMAYHTRQMRSADGQTVFYTCTNCKFQEKEDS  TRTRPLEQKLISEEDLAANDILDYKDDDDKV
Tag:	C-Myc/DDK
Purity:	> 80% as determined by SDS-PAGE and Coomassie blue staining
Concentration:	>0.05 µg/µL as determined by microplate BCA method
Labeling Method:	Labeled with [U- 13C6, 15N4]-L-Arginine and [U- 13C6, 15N2]-L-Lysine
Buffer:	25 mM Tris-HCl, 100 mM glycine, pH 7.3
Storage:	Store at -80°C. Avoid repeated freeze-thaw cycles.
Stability:	Stable for 3 months from receipt of products under proper storage and handling conditions.
RefSeq:	<a href="#">NP_740753</a>
RefSeq Size:	885
RefSeq ORF:	378
Synonyms:	A12.2; HTEX-6; HTEX6; hZR14; Rpa12; tctex-6; TCTEX6; TEX6; ZNRD1; ZR14
Locus ID:	30834
UniProt ID:	<a href="#">Q9P1U0</a> , <a href="#">Q2L6J2</a>
Cytogenetics:	6p22.1



[View online »](#)

**Summary:**

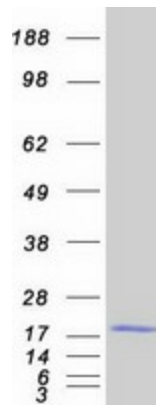
This gene encodes a DNA-directed RNA polymerase I subunit. The encoded protein contains two potential zinc-binding motifs and may play a role in regulation of cell proliferation. The encoded protein may be involved in cancer and human immunodeficiency virus progression. Alternative splicing results in multiple transcript variants. [provided by RefSeq, Jul 2013]

**Protein Families:**

Transcription Factors

**Protein Pathways:**

Metabolic pathways, Purine metabolism, Pyrimidine metabolism, RNA polymerase

**Product images:**

Coomassie blue staining of purified ZNRD1 protein (Cat# [TP308651]). The protein was produced from HEK293T cells transfected with ZNRD1 cDNA clone (Cat# [RC208651]) using MegaTran 2.0 (Cat# [TT210002]).