

Product datasheet for PH308643

APOL3 (NM_145639) Human Mass Spec Standard

Product data:

Product Type:	Mass Spec Standards
Description:	APOL3 MS Standard C13 and N15-labeled recombinant protein (NP_663614)
Species:	Human
Expression Host:	HEK293
Expression cDNA Clone or AA Sequence:	RC208643
Predicted MW:	36.5 kDa
Protein Sequence:	>RC208643 protein sequence Red=Cloning site Green=Tags(s)

MDSEKKRFTEEATKYFRERVSPVHLQILLTNNEAWKRFVTAELPRDEADALYEALKKLRTYAAIEDEYV
QQKDEQFREWFLKEFPQVKRKIQESIEKLRALANGIEEVHRGCTISNVVSSSTGAASGIMSLAGLVLAPF
TAGTSLALTAAGVGLGAASAVTGITTSIVEHSYSSAEAEASRLTATSIDRLKVFKEVMDITPNLLSLL
NNYYEATQTIGSEIRAIRQARARARLPVTTWRISAGSGGQAERTIAGTTRAVSRGARILSATTSGIFLAL
DVVNLVYESKHLHEGAKSASAEELRRQAQLEENLMELTQIYQRLNPCHTH

TRTRPLEQKLISEEDLAANDILDYKDDDDKV

Tag:	C-Myc/DDK
Purity:	> 80% as determined by SDS-PAGE and Coomassie blue staining
Concentration:	>0.05 µg/µL as determined by microplate BCA method
Labeling Method:	Labeled with [U- ¹³ C ₆ , ¹⁵ N ₄]-L-Arginine and [U- ¹³ C ₆ , ¹⁵ N ₂]-L-Lysine
Buffer:	25 mM Tris-HCl, 100 mM glycine, pH 7.3
Storage:	Store at -80°C. Avoid repeated freeze-thaw cycles.
Stability:	Stable for 3 months from receipt of products under proper storage and handling conditions.
RefSeq:	NP_663614
RefSeq Size:	2215
RefSeq ORF:	993
Synonyms:	apoL-III; APOLIII; CG12_1; CG121
Locus ID:	80833



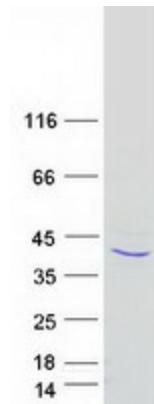
[View online »](#)

UniProt ID: [O95236](#), [A0A024R1G6](#)

Cytogenetics: 22q12.3

Summary: This gene is a member of the apolipoprotein L gene family, and it is present in a cluster with other family members on chromosome 22. The encoded protein is found in the cytoplasm, where it may affect the movement of lipids, including cholesterol, and/or allow the binding of lipids to organelles. In addition, expression of this gene is up-regulated by tumor necrosis factor-alpha in endothelial cells lining the normal and atherosclerotic iliac artery and aorta. Alternative splicing results in multiple transcript variants. [provided by RefSeq, Mar 2015]

Product images:



Coomassie blue staining of purified APOL3 protein (Cat# [TP308643]). The protein was produced from HEK293T cells transfected with APOL3 cDNA clone (Cat# [RC208643]) using MegaTran 2.0 (Cat# [TT210002]).