

Product datasheet for PH308632

LRRC8A (NM_019594) Human Mass Spec Standard

Product data:

Product Type:	Mass Spec Standards
Description:	LRRC8A MS Standard C13 and N15-labeled recombinant protein (NP_062540)
Species:	Human
Expression Host:	HEK293
Expression cDNA Clone or AA Sequence:	RC208632
Predicted MW:	94.2 kDa
Protein Sequence:	>RC208632 protein sequence Red=Cloning site Green=Tags(s)

MIPVTELRYFADTQPAYRILKPWWDFVTDYISIVMLMIAVFGGTLQVTQDKMICLPCKWVTKDSCNDSFR
GWAAPGPEPTYPNSTILPTDGTGPTGIKYDLDRHQYNYVDAVCYENRLHWFAKYFPYLVLHLTLIFLACS
NFWFKFPRTSSKLEHFVSILLKCFDSPWTRALSETVVEESDPKPAFSKMNGSMDKKSSTVSEDVEATVP
MLQRTKSRIEQGIVDRSETGVLDKKEGEQAKALFEKVKKFRTHVEEGDIVYRLYMRQTIKVIKILIIIC
YTVYYVHNIKFDVDCTVDIESL TGYRTRYCAHPLATL FKILASFYISLVIFYGLICMYTLWMLRRLSKK
YSFESIREESSYSDIPDVKNDF AFMLHL IDQYDPLYSKRFVFL SEVSENKLRQLNLNNEWTLDKLRQL
TKNAQDKLELHLFMLSGIPDVF DLVELEVLKLELIPDVTIPPSIAQL TGLKELWLYHTAAKIEAPALAF
LRENLRALHIKFTDIKEIPLWIYSLKTLLEELHL TGNLSAENRYI VIDGLRELKRLKVLRLKSNLSKLPQ
VVTDVGVHLQKLSINNEGTKLIVLSLKKMANL TELELIRCDLERIPHSIFSLHNLQEIDLKDNLKTIE
E IISFQHLHRL TCLKLWYNHIAIPIQIGNL TNLERLYLNRNKIEKIPTQLFYCRKLRYLDSLHNNLTF
PADIGLLQNLQNLAITANRIETLPPELFQCRKLRALHLGNNVLQSLPSRVGELTNLTQIELRGNRLECLP
VELGECPLLKRSGLVVEEDLFNTLPPEVKERLWRADKEQA

TRTRPLEQKLI SEEDLAANDILDYKDDDDKV

Tag:	C-Myc/DDK
Purity:	> 80% as determined by SDS-PAGE and Coomassie blue staining
Concentration:	>0.05 µg/µL as determined by microplate BCA method
Labeling Method:	Labeled with [U- ¹³ C ₆ , ¹⁵ N ₄]-L-Arginine and [U- ¹³ C ₆ , ¹⁵ N ₂]-L-Lysine
Buffer:	25 mM Tris-HCl, 100 mM glycine, pH 7.3
Storage:	Store at -80°C. Avoid repeated freeze-thaw cycles.
Stability:	Stable for 3 months from receipt of products under proper storage and handling conditions.
RefSeq:	<u>NP_062540</u>



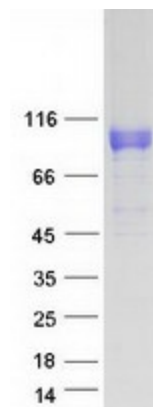
[View online »](#)

RefSeq Size:	4368
RefSeq ORF:	2430
Synonyms:	AGM5; HsLRRC8A; LRRC8; SWELL1
Locus ID:	56262
UniProt ID:	Q8IWT6 , A0A024R892
Cytogenetics:	9q34.11

Summary: This gene encodes a protein belonging to the leucine-rich repeat family of proteins, which are involved in diverse biological processes, including cell adhesion, cellular trafficking, and hormone-receptor interactions. This family member is a putative four-pass transmembrane protein that plays a role in B cell development. Defects in this gene cause autosomal dominant non-Bruton type agammaglobulinemia, an immunodeficiency disease resulting from defects in B cell maturation. Multiple alternatively spliced transcript variants, which encode the same protein, have been identified for this gene. [provided by RefSeq, Jul 2008]

Protein Families: Transmembrane

Product images:



Coomassie blue staining of purified LRRC8A protein (Cat# [TP308632]). The protein was produced from HEK293T cells transfected with LRRC8A cDNA clone (Cat# [RC208632]) using MegaTran 2.0 (Cat# [TT210002]).