

Product datasheet for PH308622

SRC (NM_005417) Human Mass Spec Standard

Product data:

Product Type:	Mass Spec Standards
Description:	SRC MS Standard C13 and N15-labeled recombinant protein (NP_005408)
Species:	Human
Expression Host:	HEK293
Expression cDNA Clone or AA Sequence:	RC208622
Predicted MW:	59.7 kDa
Protein Sequence:	>RC208622 representing NM_005417 Red=Cloning site Green=Tags(s)

MGSNKSQPKDASQRRRSLEPAENVHGAGGGAFFASQTPSKPASADGHRGSAAFAPAAAEPKLFGGFNSS
DTVTSPQRAGPLAGGVTTFFVALYDYESRTETDL SFKKGERLQIVNNTGDDWLAHSLSTGQTGYIPSNYV
APSDSIQAEWYFGKITRRESERLLLNAENPRGTFLVRESETTKGAYCLSVSDFDNAKGLNVKHYKIRKL
DSGGFYITSRTQFNLSLQQLVAYYSKHADGLCHRLTTVCPTSKPQTQGLAKDAWEIPRESLRLEVKLGQGC
FGEVWMTWNGTTRVAIKTLKPGTMSPEAFLQEAQVMKKLRHEKLVQLYAVVSEEPYIYIVTEYMSKGSLL
DFLKGETGKYLRLPQLVDMAAQIASGMAYVERMNYVHRDLRAANILVGENLVCKVADFLARLIEDNEYT
ARQGAKFPKWTAPEAALYGRFTIKSDVWSFGILLTELTTKGRVPYPMVNREVLQDVERGYRMPCPPEC
PESLHDLMCQCRKEPEERPTFEYLQAFLEDYFTSTEPQYQGENL

TRTRPLEQKLI SEEDLAANDILDYKDDDDKV

Tag:	C-Myc/DDK
Purity:	> 80% as determined by SDS-PAGE and Coomassie blue staining
Concentration:	>0.05 µg/µL as determined by microplate BCA method
Labeling Method:	Labeled with [U- ¹³ C ₆ , ¹⁵ N ₄]-L-Arginine and [U- ¹³ C ₆ , ¹⁵ N ₂]-L-Lysine
Buffer:	25 mM Tris-HCl, 100 mM glycine, pH 7.3
Storage:	Store at -80°C. Avoid repeated freeze-thaw cycles.
Stability:	Stable for 3 months from receipt of products under proper storage and handling conditions.
RefSeq:	<u>NP_005408</u>
RefSeq Size:	4145
RefSeq ORF:	1608



[View online »](#)

Synonyms: ASV; c-SRC; p60-Src; SRC1; THC6

Locus ID: 6714

UniProt ID: [P12931](#)

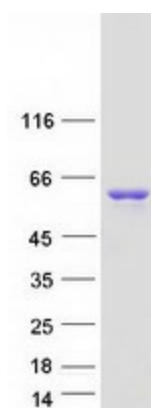
Cytogenetics: 20q11.23

Summary: This gene is highly similar to the v-src gene of Rous sarcoma virus. This proto-oncogene may play a role in the regulation of embryonic development and cell growth. The protein encoded by this gene is a tyrosine-protein kinase whose activity can be inhibited by phosphorylation by c-SRC kinase. Mutations in this gene could be involved in the malignant progression of colon cancer. Two transcript variants encoding the same protein have been found for this gene. [provided by RefSeq, Jul 2008]

Protein Families: Druggable Genome, ES Cell Differentiation/IPS, Protein Kinase, Stem cell relevant signaling - JAK/STAT signaling pathway

Protein Pathways: Adherens junction, Endocytosis, Epithelial cell signaling in Helicobacter pylori infection, ErbB signaling pathway, Focal adhesion, Gap junction, GnRH signaling pathway, Tight junction, VEGF signaling pathway

Product images:



Coomassie blue staining of purified SRC protein (Cat# [TP308622]). The protein was produced from HEK293T cells transfected with SRC cDNA clone (Cat# [RC208622]) using MegaTran 2.0 (Cat# [TT210002]).