

## Product datasheet for PH308594

### CTBP1 (NM\_001012614) Human Mass Spec Standard

#### Product data:

Product Type:	Mass Spec Standards
Description:	CTBP1 MS Standard C13 and N15-labeled recombinant protein (NP_001012632)
Species:	Human
Expression Host:	HEK293
Expression cDNA Clone or AA Sequence:	RC208594
Predicted MW:	46.4 kDa
Protein Sequence:	>RC208594 protein sequence Red=Cloning site Green=Tags(s)

MSGVRPPIMNGPLHPRPLVALLDGRDCTVEMPILKDVATVAFCDQSTQEIKEKVLNEAVGALMYHTITL  
TREDLEKFKALRIIVRIGSGFDNIDIKSAGDLGIAVCNVAASVEETADSTLCHILNLYRRATWLHQALR  
EGTRVQSVEQIREVASGAARIRGETLGIIGLGRVQAVALARAKAFGNVLFYDPYLSGVERALGLQRVS  
TLQDLLFHSDCVTLHCGLEHNNHLLINDFTVKQMRQGAFLVNTARGGLVDEKALAQALKEGRIRGAALDV  
HESEPFSSQGPLKDAPNLICTPHAAWYSEQASIEEMREEAAREIRRAITGRIPDSLKNCVNDHLTAATH  
WASMDPAVVHPELNGAAYRYPGGVGVAPTGIPAAVEGIVPSAMSLSHGLPPVAHPPHAPSPGQTVKPEA  
DRDHASDQL

TRTRPLEQKLISEEDLAANDILDYKDDDDKV

Tag:	C-Myc/DDK
Purity:	> 80% as determined by SDS-PAGE and Coomassie blue staining
Concentration:	>0.05 µg/µL as determined by microplate BCA method
Labeling Method:	Labeled with [U- <sup>13</sup> C <sub>6</sub> , <sup>15</sup> N <sub>4</sub> ]-L-Arginine and [U- <sup>13</sup> C <sub>6</sub> , <sup>15</sup> N <sub>2</sub> ]-L-Lysine
Buffer:	25 mM Tris-HCl, 100 mM glycine, pH 7.3
Storage:	Store at -80°C. Avoid repeated freeze-thaw cycles.
Stability:	Stable for 3 months from receipt of products under proper storage and handling conditions.
RefSeq:	<u>NP_001012632</u>
RefSeq Size:	2483
RefSeq ORF:	1287
Synonyms:	BARS; HADDTS



[View online »](#)

Locus ID: 1487

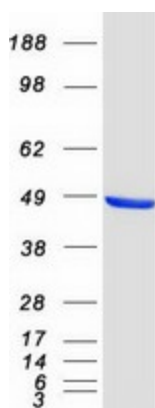
UniProt ID: [Q13363](#)

Cytogenetics: 4p16.3

**Summary:** This gene encodes a protein that binds to the C-terminus of adenovirus E1A proteins. This phosphoprotein is a transcriptional repressor and may play a role during cellular proliferation. This protein and the product of a second closely related gene, CTBP2, can dimerize. Both proteins can also interact with a polycomb group protein complex which participates in regulation of gene expression during development. Alternative splicing of transcripts from this gene results in multiple transcript variants. [provided by RefSeq, Jul 2008]

**Protein Pathways:** Chronic myeloid leukemia, Notch signaling pathway, Pathways in cancer, Wnt signaling pathway

### Product images:



Coomassie blue staining of purified CTBP1 protein (Cat# [TP308594]). The protein was produced from HEK293T cells transfected with CTBP1 cDNA clone (Cat# [RC208594]) using MegaTran 2.0 (Cat# [TT210002]).