

Product datasheet for PH308593

TCL1B (NM_004918) Human Mass Spec Standard

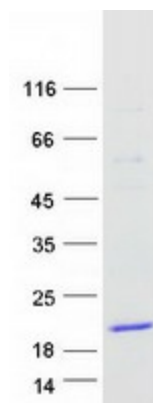
Product data:

Product Type:	Mass Spec Standards
Description:	TCL1B MS Standard C13 and N15-labeled recombinant protein (NP_004909)
Species:	Human
Expression Host:	HEK293
Expression cDNA Clone or AA Sequence:	RC208593
Predicted MW:	14.9 kDa
Protein Sequence:	<p>>RC208593 protein sequence</p> <p>Red=Cloning site Green=Tags(s)</p> <p>MASEASVRLGVPPGRLWIQRPGIYEDEEGRTWTVVVRFNPSRREWARASQGSRYEPSITVHLWQMAVHT RELSSGQMFPFSQLPAVWQLYPRRKYRAADSSFWEIADHGQIDSMEQLVLTYPQPERKD</p> <p>TRTRPLEQKLISEEDLAANDILDYKDDDDKV</p>
Tag:	C-Myc/DDK
Purity:	> 80% as determined by SDS-PAGE and Coomassie blue staining
Concentration:	>0.05 µg/µL as determined by microplate BCA method
Labeling Method:	Labeled with [U- 13C6, 15N4]-L-Arginine and [U- 13C6, 15N2]-L-Lysine
Buffer:	25 mM Tris-HCl, 100 mM glycine, pH 7.3
Storage:	Store at -80°C. Avoid repeated freeze-thaw cycles.
Stability:	Stable for 3 months from receipt of products under proper storage and handling conditions.
RefSeq:	NP_004909
RefSeq Size:	1172
RefSeq ORF:	384
Synonyms:	SYN-1; TML1
Locus ID:	9623
UniProt ID:	O95988 , A0A024R6P4
Cytogenetics:	14q32.13


[View online »](#)

Summary: Enhances the phosphorylation and activation of AKT1 and AKT2.[UniProtKB/Swiss-Prot Function]

Product images:



Coomassie blue staining of purified TCL1B protein (Cat# [TP308593]). The protein was produced from HEK293T cells transfected with TCL1B cDNA clone (Cat# [RC208593]) using MegaTran 2.0 (Cat# [TT210002]).