

Product datasheet for PH308591

PHKG1 (NM_006213) Human Mass Spec Standard

Product data:

Product Type:	Mass Spec Standards
Description:	PHKG1 MS Standard C13 and N15-labeled recombinant protein (NP_006204)
Species:	Human
Expression Host:	HEK293
Expression cDNA Clone or AA Sequence:	RC208591
Predicted MW:	45 kDa
Protein Sequence:	>RC208591 protein sequence Red=Cloning site Green=Tags(s)
	MTRDEALPDSHSAQDFYENYEPKEILGRGVSSVRRRCIHKPTSQEYAVKVIDVTGGGSFSPEEVRELREA TLKEVDILRKVSGHPNIIQLKDTYETNTFFFLVFDLMKRGELFDYLTEKVTLSEKETRKIMRALLEVICT LHKLNIIVHRDLKPENILLDDNMNIKL TDFGFSCQLEPGERLREVCGTPSYLAPEIIIECSMNEDHPGYGKE VDMWSTGVIMYTL LAGSPPFWHRKQMLMLRMIMSGNYQFGSPEWDDYSDTVKDLVSRFLVVQPQNRYTAE EALAHPPFFQQYLVEEVRFHFSRPGKFKVIALTVLASVRIYYQYRRVKPVTREIVIRDPYALRPLRRLIDAY AFRIYGHVWKKGQQNRAALFENTPKAVLLSLAEEDY
	TRTRPLEQKLI SEEDLAANDILDYKDDDDKV
Tag:	C-Myc/DDK
Purity:	> 80% as determined by SDS-PAGE and Coomassie blue staining
Concentration:	>0.05 µg/µL as determined by microplate BCA method
Labeling Method:	Labeled with [U- ¹³ C ₆ , ¹⁵ N ₄]-L-Arginine and [U- ¹³ C ₆ , ¹⁵ N ₂]-L-Lysine
Buffer:	25 mM Tris-HCl, 100 mM glycine, pH 7.3
Storage:	Store at -80°C. Avoid repeated freeze-thaw cycles.
Stability:	Stable for 3 months from receipt of products under proper storage and handling conditions.
RefSeq:	NP_006204
RefSeq Size:	2130
RefSeq ORF:	1161
Synonyms:	PHKG
Locus ID:	5260



[View online »](#)

UniProt ID: [Q16816](#), [A0A024RDL4](#)

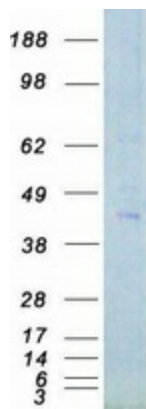
Cytogenetics: 7p11.2

Summary: This gene is a member of the Ser/Thr protein kinase family and encodes a protein with one protein kinase domain and two calmodulin-binding domains. This protein is the catalytic member of a 16 subunit protein kinase complex which contains equimolar ratios of 4 subunit types. The complex is a crucial glycogenolytic regulatory enzyme. This gene has two pseudogenes at chromosome 7q11.21 and one at chromosome 11p11.12. Multiple transcript variants encoding different isoforms have been found for this gene. [provided by RefSeq, May 2012]

Protein Families: Druggable Genome, Protein Kinase

Protein Pathways: Calcium signaling pathway, Insulin signaling pathway

Product images:



Coomassie blue staining of purified PHKG1 protein (Cat# [TP308591]). The protein was produced from HEK293T cells transfected with PHKG1 cDNA clone (Cat# [RC208591]) using MegaTran 2.0 (Cat# [TT210002]).