

## Product datasheet for PH308582

### SIGLEC8 (NM\_014442) Human Mass Spec Standard

#### Product data:

|                                       |   |
|---------------------------------------|---|
| Product Type:                         | Mass Spec Standards   |
| Description:                          | SIGLEC8 MS Standard C13 and N15-labeled recombinant protein (NP_055257) |
| Species:                              | Human   |
| Expression Host:                      | HEK293  |
| Expression cDNA Clone or AA Sequence: | RC208582  |
| Predicted MW:                         | 54.1 kDa  |
| Protein Sequence:                     | >RC208582 protein sequence<br>Red=Cloning site Green=Tags(s)            |

MLLLLLLLPLLWGTKMEGDRQYGDGYLLQVQELVTVQEGLCVHVPCSF SYPQDGWTDSDPVHGYWFRAG  
DRPYQDAPVATNPDREVQAETQGRFQLLGDIWSNDCSL SIRDARKRDKGSYFFRLERGS MKWSYKSQLN  
YKTKQLSVFVTALTHRPDILILGTLESGHPRNL TCSVPWACKQGT PPMISWIGASVSSPGPTTARSSVLT  
LTPKPDHGTSL TCQVTLPGTGVTTTSTVRLDVSYPWNLTMTVFQGDASTALGNGSSLSVLEGQSLR  
LCAVNSNPPARLSWTRGSL TLCPSSNPGLLELPRVHVRDEGEFT CRAQNAQGSQHISLSLSLQNEGT  
GTSRPVSQVTLAAVGGAGATALAFLSFCIIF IIVRSCRKKSARPAAGVGTGMEDAKAIRGSASQGPLTE  
SWKDG NPLKKPPPAVAPSSGEEGELHYATLSFHKVKPQDPQGEATDSEYSEIKIHKRETAETQACL RNH  
NPSSKEVRG

TRTRPLEQKLI SEEDLAANDILDYKDDDDKV

|                  |  |
|------------------|--|
| Tag:             | C-Myc/DDK  |
| Purity:          | > 80% as determined by SDS-PAGE and Coomassie blue staining                                |
| Concentration:   | >0.05 µg/µL as determined by microplate BCA method   |
| Labeling Method: | Labeled with [U- 13C6, 15N4]-L-Arginine and [U- 13C6, 15N2]-L-Lysine                       |
| Buffer:          | 25 mM Tris-HCl, 100 mM glycine, pH 7.3   |
| Storage:         | Store at -80°C. Avoid repeated freeze-thaw cycles.   |
| Stability:       | Stable for 3 months from receipt of products under proper storage and handling conditions. |
| RefSeq:          | <a href="#">NP_055257</a>  |
| RefSeq Size:     | 2967   |
| RefSeq ORF:      | 1497   |



[View online »](#)

**Synonyms:** SAF2; SIGLEC-8; SIGLEC8L

**Locus ID:** 27181

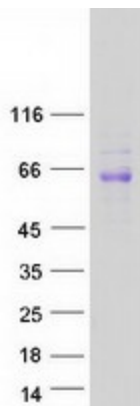
**UniProt ID:** [Q9NYZ4](#)

**Cytogenetics:** 19q13.41

**Summary:** Sialic acid-binding immunoglobulin (Ig)-like lectins, or SIGLECs (e.g., CD33 (MIM 159590)), are a family of type 1 transmembrane proteins each having a unique expression pattern, mostly in hemopoietic cells. SIGLEC8 is a member of the CD33-like subgroup of SIGLECs, which are localized to 19q13.3-q13.4 and have 2 conserved cytoplasmic tyrosine-based motifs: an immunoreceptor tyrosine-based inhibitory motif, or ITIM (see MIM 604964), and a motif homologous to one identified in signaling lymphocyte activation molecule (SLAM; MIM 603492) that mediates an association with SLAM-associated protein (SAP; MIM 300490) (summarized by Foussias et al., 2000 [PubMed 11095983]).[supplied by OMIM, May 2010]

**Protein Families:** Druggable Genome, Transmembrane

### Product images:



Coomassie blue staining of purified SIGLEC8 protein (Cat# [TP308582]). The protein was produced from HEK293T cells transfected with SIGLEC8 cDNA clone (Cat# [RC208582]) using MegaTran 2.0 (Cat# [TT210002]).