

Product datasheet for PH308565

FAM83A (NM_032899) Human Mass Spec Standard

Product data:

Product Type:	Mass Spec Standards
Description:	FAM83A MS Standard C13 and N15-labeled recombinant protein (NP_116288)
Species:	Human
Expression Host:	HEK293
Expression cDNA Clone or AA Sequence:	RC208565
Predicted MW:	47.5 kDa
Protein Sequence:	>RC208565 protein sequence Red=Cloning site Green=Tags(s)

MSRSRHLGKIRKLEDVKSQWVRPARADFSDNESARLATDALLDGGSEAYWRVLSQEGEVDFLSSVEAQY
IQAQAREPPCPPDTLGGAEAGPKGLDSSSLQSGTYFPVASEGSEPALHWSASAEKPYLKEKSSATVYFQ
TYKHNNIRDLVRRICITRTSQVLVILMDVFTDVEIFCDILEAANKRGVFCVLLDQGGVKLFQEMCDKVQI
SDSHLKNISIRSVEGEIYCAKSGRKFAGQIREKFIISDWRVFLSGSYSFTWLCGHVHRNILSKFTGQAVE
LFDEEFRHLIYASSKPVMLKSPRLVAPVPPGAAPANGRLSSSSGSASDRTSSNPFSGRSAGSHPGTRSVS
ASSGPCSPAAPHPPPPRFQPHQGPWGAPSPQAHLSPRPHDGPPAAVYSNLGAYRPTLQLEQLGLVPRL
TPTWRPFLQASPHF

TRTRPLEQKLI SEEDLAANDILDYKDDDDKV

Tag:	C-Myc/DDK
Purity:	> 80% as determined by SDS-PAGE and Coomassie blue staining
Concentration:	>0.05 µg/µL as determined by microplate BCA method
Labeling Method:	Labeled with [U- ¹³ C ₆ , ¹⁵ N ₄]-L-Arginine and [U- ¹³ C ₆ , ¹⁵ N ₂]-L-Lysine
Buffer:	25 mM Tris-HCl, 100 mM glycine, pH 7.3
Storage:	Store at -80°C. Avoid repeated freeze-thaw cycles.
Stability:	Stable for 3 months from receipt of products under proper storage and handling conditions.
RefSeq:	<u>NP_116288</u>
RefSeq Size:	4596
RefSeq ORF:	1302
Synonyms:	BJ-TSA-9



[View online »](#)

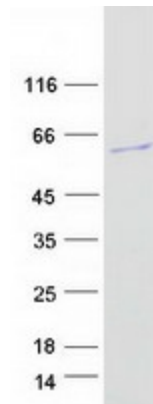
Locus ID: 84985

UniProt ID: [Q86UY5](#)

Cytogenetics: 8q24.13

Summary: Probable proto-oncogene that functions in the epidermal growth factor receptor/EGFR signaling pathway. Activates both RAS/MAPK and PI3K/AKT/TOR signaling cascades downstream of EGFR. Required for the RAS/MAPK signaling cascade activation upon EGFR stimulation, it also activates both signaling cascades independently of EGFR activation. [UniProtKB/Swiss-Prot Function]

Product images:



Coomassie blue staining of purified FAM83A protein (Cat# [TP308565]). The protein was produced from HEK293T cells transfected with FAM83A cDNA clone (Cat# [RC208565]) using MegaTran 2.0 (Cat# [TT210002]).