

## Product datasheet for PH308536

### ADSS1 (NM\_152328) Human Mass Spec Standard

#### Product data:

Product Type:	Mass Spec Standards
Description:	ADSSL1 MS Standard C13 and N15-labeled recombinant protein (NP_689541)
Species:	Human
Expression Host:	HEK293
Expression cDNA Clone or AA Sequence:	RC208536
Predicted MW:	50.2 kDa
Protein Sequence:	>RC208536 protein sequence Red=Cloning site Green=Tags(s)

MSGTRASNDRPPGAGGVKRGRLQQEAAATGSRVTVVLGAQWDEGKGVVDLLATDADIISRCQGGNNAG  
HTVVVDGKEYDFHLLPSGIINTKAVSFIGNGVVIHLPLGFEEAEKNEKKGLKDWEKRLIISDRAHLVDFD  
HQAVDGLQEVQRQAQEGKNIGTTKKGIGPTYSSKAARTGLRICDLLSDFDEFSSRFKNLAHQHSMFPTL  
EIDIEGQLKRLKGAERIRPMVRDGVYFMYEALHGPPKILVEGANAALLDIDFGTYPFVTSNCTVGGV  
CTGLGIPPQNIQDVGKAYTTRVGIGAFPTQINEIGLLQTRGHEWGVTTGRKRRCGWLDLMLRYA  
HVMNGFTALALTKLDILDVLGEVKVGVSYKLNKRIPYFPANQEMLQKVEVEYETLPGWKADTTGARRWE  
DLPPQAQNYIRFVENHVGVAVKWVGKVSRESMIQLF

TRTRPLEQKLISEEDLAANDILDYKDDDDKV

Tag:	C-Myc/DDK
Purity:	> 80% as determined by SDS-PAGE and Coomassie blue staining
Concentration:	>0.05 µg/µL as determined by microplate BCA method
Labeling Method:	Labeled with [U- <sup>13</sup> C <sub>6</sub> , <sup>15</sup> N <sub>4</sub> ]-L-Arginine and [U- <sup>13</sup> C <sub>6</sub> , <sup>15</sup> N <sub>2</sub> ]-L-Lysine
Buffer:	25 mM Tris-HCl, 100 mM glycine, pH 7.3
Storage:	Store at -80°C. Avoid repeated freeze-thaw cycles.
Stability:	Stable for 3 months from receipt of products under proper storage and handling conditions.
RefSeq:	<a href="#">NP_689541</a>
RefSeq Size:	1769
RefSeq ORF:	1371
Synonyms:	ADSSL1; MPD5



[View online »](#)

Locus ID: 122622

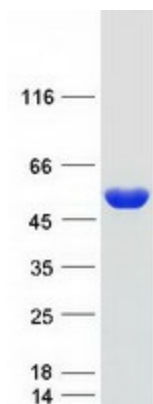
UniProt ID: [Q8N142](#)

Cytogenetics: 14q32.33

**Summary:** This gene encodes a member of the adenylosuccinate synthase family of proteins. The encoded muscle-specific enzyme plays a role in the purine nucleotide cycle by catalyzing the first step in the conversion of inosine monophosphate (IMP) to adenosine monophosphate (AMP). Mutations in this gene may cause adolescent onset distal myopathy. Alternative splicing results in multiple transcript variants. [provided by RefSeq, Feb 2016]

**Protein Pathways:** Alanine, aspartate and glutamate metabolism, Metabolic pathways, Purine metabolism

### Product images:



Coomassie blue staining of purified ADSSL1 protein (Cat# [TP308536]). The protein was produced from HEK293T cells transfected with ADSSL1 cDNA clone (Cat# [RC208536]) using MegaTran 2.0 (Cat# [TT210002]).