

Product datasheet for PH308535

LEMD2 (NM_181336) Human Mass Spec Standard

Product data:

Product Type:	Mass Spec Standards
Description:	LEMD2 MS Standard C13 and N15-labeled recombinant protein (NP_851853)
Species:	Human
Expression Host:	HEK293
Expression cDNA Clone or AA Sequence:	RC208535
Predicted MW:	57 kDa
Protein Sequence:	>RC208535 protein sequence Red=Cloning site Green=Tags(s)

MAGLSDLELRRELQALGFQPGPITDTRDYYRNKLRRLRGEARLRDEERLREEARPRGEERLREEARLRE
DAPLRARPAASPRAPWLSQPASGSAYATPGAYGDIRPSAASWVGSRGLAYPARPAQLRRRASVRSSE
EDEDARTPDRATQGPGLAARRWAAASPAPARLPSSLLGPDPRPGLRATRAGPAGAARARPEVGRRLERWL
SRLLLWASLGLLLVFLGILWVKMGKPSAPQEAEDNMKLLPVDCERKTDFCQAKQKAALLELLHELNYFL
AIQAGNFECGNPENLKSKCIPVMEAEQYIANVTSSSSAKFEAALTWILSSNKDVGIWLKGEDQSELVTTV
DKVVCLESAHPRMGVGCRLSRALLTAVTNVLIFFWCLAFWLWLLILLKYRWRKLEEEQAMYEMVKKIID
VVQDHYVDWEQDMERYPYVVGILHVRDSLIPPQSRRRMKRVWDRAVEFLASNESRIQTESHVRVAGEDMLVW
RWTKPSSFSDSER

TRTRPLEQKLISEEDLAANDILDYKDDDDKV

Tag:	C-Myc/DDK
Purity:	> 80% as determined by SDS-PAGE and Coomassie blue staining
Concentration:	>0.05 µg/µL as determined by microplate BCA method
Labeling Method:	Labeled with [U- 13C6, 15N4]-L-Arginine and [U- 13C6, 15N2]-L-Lysine
Buffer:	25 mM Tris-HCl, 100 mM glycine, pH 7.3
Storage:	Store at -80°C. Avoid repeated freeze-thaw cycles.
Stability:	Stable for 3 months from receipt of products under proper storage and handling conditions.
RefSeq:	<u>NP_851853</u>
RefSeq Size:	2957
RefSeq ORF:	1509



[View online »](#)

Synonyms: CTRECT42; dJ482C21.1; LEM2; MARUPS; NET25

Locus ID: 221496

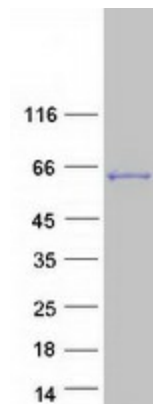
UniProt ID: [Q8NC56](#), [A0A024RCZ1](#)

Cytogenetics: 6p21.31

Summary: This gene encodes a LEM domain-containing transmembrane protein of the inner nuclear membrane. The protein is involved in nuclear structure organization and plays a role in cell signaling and differentiation. Mutations in this gene result in Cataract 46, juvenile-onset. Multiple transcript variants have been found for this gene. [provided by RefSeq, Feb 2017]

Protein Families: Transmembrane

Product images:



Coomassie blue staining of purified LEMD2 protein (Cat# [TP308535]). The protein was produced from HEK293T cells transfected with LEMD2 cDNA clone (Cat# [RC208535]) using MegaTran 2.0 (Cat# [TT210002]).