

Product datasheet for PH308534

SMARCC1 (NM_003074) Human Mass Spec Standard

Product data:

Product Type:	Mass Spec Standards
Description:	SMARCC1 MS Standard C13 and N15-labeled recombinant protein (NP_003065)
Species:	Human
Expression Host:	HEK293
Expression cDNA Clone or AA Sequence:	RC208534
Predicted MW:	122.9 kDa
Protein Sequence:	>RC208534 representing NM_003074 Red=Cloning site Green=Tags(s)

MAAAAGGGPGTAVGATGSGIAAAAAGLAVYRRKDGGPATKFWESPETVSQLDSVRVWLGKHYKYYVHAD
 APTNKTLAAGLVVQLLQFQEDAFGKHVTNPAFTKLPKACFMDFKAGGALCHILGAAKYKNEQGWRFDLQ
 NPSRMDRNVEMFNIIEKTLVQNNCLTRPNIYLIPDIDLKLANKLKDI IKRHQGTFTDEKSKASHHIYPYS
 SSQDDEEWLRPVMRKEKQVLVHWGFYDPSYDVTWVHSNDVDAEIEDPPIPEKPWKVHVHWKILDTDIFNEWM
 NEEDYEVDENRKPVSFRQRI STKNEEVPVSPERRDRKASANARKRKHSPSPPTPTESRKKSGKKQAS
 LYGKRRSQKEEDEQEDLTKMEDPTVPVNIIEVVLKPNVNLKKDSENTPVKGGTVADLDEQDEETVTAGG
 KEDEDPKAGDQSRVDLGEDNVTEQTNHIIIPSYASWFDYNCIHVIERRALPEFFNGKNSKTPEIYLAY
 RNF MIDTYRLNPQEYL TSTACRRNL TGDVCAVMRVHAFLEQWGL VNYQVDPE SRPMAMGPPPTPHFNVLA
 DTPSGLVPLHLRSPQVPAQAQMLNFPEKNKEKPVLDLQNFGLRTDIYSKTLAKSKGASAGREWTEQETLL
 LLEALEMYKDDWNVSEHVGSRTQDECILHFLRPLIEDPYLENSDASLGPLAYQPVFSSQSGNPVMSTVA
 FLASVVDPRVASAAKAAL EEF SRVREEVPLELVEAHVKKVQEAARASGKVDPTYGLESSCIAGTGPDEP
 EKLEGAEEKMEADPDGQPEKAENKVENETDEGDKAQDGENEKNSEKEQDSEVSEDTKSEEKETEENKE
 LTDTCKERESDTGKKKVEHEISEGNVATAAAAALASAATKAKHLAAVEERKIKSLVALLVETQMKKLEIK
 LRHFEELETIMDREKEALEQQRQQLLTERQNFHMEQLKYAELRARQQMEQQQHGNPQQAHQHSGGPGLA
 PLGAAGHPGMMPHQPPPPYPLMHHQMPPPHPPQPGQIPGPGSMMPGQHMPGRMIPTVAANIHPSGSGPTP
 PGMPMPGNILGPRVPLTAPNGMYPPPPQQPPPPPPADGVPPPPAPGPPASAAP

TRTRPLEQKLI SEEDLAANDILDYKDDDDKV

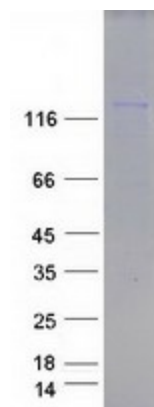
Tag:	C-Myc/DDK
Purity:	> 80% as determined by SDS-PAGE and Coomassie blue staining
Concentration:	>0.05 µg/µL as determined by microplate BCA method
Labeling Method:	Labeled with [U- 13C6, 15N4]-L-Arginine and [U- 13C6, 15N2]-L-Lysine
Buffer:	25 mM Tris-HCl, 100 mM glycine, pH 7.3



[View online »](#)

Storage:	Store at -80°C. Avoid repeated freeze-thaw cycles.
Stability:	Stable for 3 months from receipt of products under proper storage and handling conditions.
RefSeq:	NP_003065
RefSeq Size:	5780
RefSeq ORF:	3315
Synonyms:	BAF155; CRACC1; Rsc8; SRG3; SWI3
Locus ID:	6599
UniProt ID:	Q92922 , Q58EY4
Cytogenetics:	3p21.31
Summary:	The protein encoded by this gene is a member of the SWI/SNF family of proteins, whose members display helicase and ATPase activities and which are thought to regulate transcription of certain genes by altering the chromatin structure around those genes. The encoded protein is part of the large ATP-dependent chromatin remodeling complex SNF/SWI and contains a predicted leucine zipper motif typical of many transcription factors. [provided by RefSeq, Jul 2008]
Protein Families:	Stem cell - Pluripotency, Transcription Factors

Product images:



Coomassie blue staining of purified SMARCC1 protein (Cat# [TP308534]). The protein was produced from HEK293T cells transfected with SMARCC1 cDNA clone (Cat# [RC208534]) using MegaTran 2.0 (Cat# [TT210002]).