

Product datasheet for PH308533

Mitochondrial Translational Initiation Factor 3 (MTIF3) (NM_152912) Human Mass Spec Standard

Product data:

Product Type:	Mass Spec Standards
Description:	MTIF3 MS Standard C13 and N15-labeled recombinant protein (NP_690876)
Species:	Human
Expression Host:	HEK293
Expression cDNA Clone or AA Sequence:	RC208533
Predicted MW:	31.7 kDa
Protein Sequence:	>RC208533 protein sequence Red=Cloning site Green=Tags(s)
	MAALFLKRLTLQTVKSENSCIRCFGKHILQKTAPAQLSPIASAPRLSFLIHAKAFSTAEDTQNEGKKIKK NKTAFSNVGRKISQRVIHLFDEKGNLGNMHRANVIRLMDERDLRLVQRNTSTEPAEYQLMTGLQILQER QRLREMEKANPKTGPTLRKELILSSNIGQHDLDTKTKQIQWIKKKHLVQITIKKGKNVDVSEMEMEEIF HQILQTMPGIATFSSRPQAVQGGKALMCVLRALSKNEEKAYKETQETQERDTLNKDHGNDKESNVLHQ
	TRTRPLEQKLISEEDLAANDILDYKDDDDKV
Tag:	C-Myc/DDK
Purity:	> 80% as determined by SDS-PAGE and Coomassie blue staining
Concentration:	>0.05 µg/µL as determined by microplate BCA method
Labeling Method:	Labeled with [U- ¹³ C ₆ , ¹⁵ N ₄]-L-Arginine and [U- ¹³ C ₆ , ¹⁵ N ₂]-L-Lysine
Buffer:	25 mM Tris-HCl, 100 mM glycine, pH 7.3
Storage:	Store at -80°C. Avoid repeated freeze-thaw cycles.
Stability:	Stable for 3 months from receipt of products under proper storage and handling conditions.
RefSeq:	<u>NP_690876</u>
RefSeq Size:	1037
RefSeq ORF:	834
Synonyms:	IF3mt
Locus ID:	219402



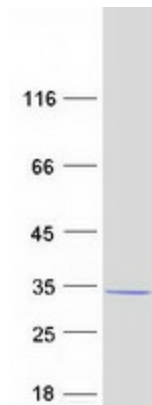
[View online »](#)

UniProt ID: [Q9H2K0](#)

Cytogenetics: 13q12.2

Summary: This gene encodes a translation initiation factor that is involved in mitochondrial protein synthesis. Polymorphism in this gene is associated with the onset of Parkinson's disease. Alternate splicing results in multiple transcript variants. A pseudogene of this gene is found on chromosome 5. [provided by RefSeq, Oct 2009]

Product images:



Coomassie blue staining of purified MTIF3 protein (Cat# [TP308533]). The protein was produced from HEK293T cells transfected with MTIF3 cDNA clone (Cat# [RC208533]) using MegaTran 2.0 (Cat# [TT210002]).