

## Product datasheet for PH308509

### SLC14A1 (NM\_015865) Human Mass Spec Standard

#### Product data:

Product Type:	Mass Spec Standards
Description:	SLC14A1 MS Standard C13 and N15-labeled recombinant protein (NP_056949)
Species:	Human
Expression Host:	HEK293
Expression cDNA Clone or AA Sequence:	RC208509
Predicted MW:	42.5 kDa
Protein Sequence:	>RC208509 protein sequence Red=Cloning site Green=Tags(s)  MEDSPTMVRVDSPTMVRGENQVSPCQGRRCFPKALGYVTGDMKELANQLKDKPVVLQFIDWILRGISQVV FVNNPVSIGILILVGLLVQNPWWALTGWLGTVVSTLMALLSQDRSLIASGLYGYNATLVGVLMVAFSDKG DYFWWLLLPVCAMSMTCPIFSSALNSVLSKWDLPVFTLPFNMALSMYLSATGHYNPFPAKLVIPITTAP NISWSDLSALELLKSIPVGVGQIYGCNPWTGGIFLGAILLSSPLMCLHAAIGSLLGIAAGLSLAPFEN IYFGLWGFNSSLACIAMGGMFALTWQTHLLALGCALFTAYLVGGMANFMAEVGLPACTWPFCLATLLFL IMTTKNSNIYKMPLSKVTYPEENRIFYLQAKKRMVESPL  TRTRPLEQKLI SEEDLAANDILDYKDDDDKV
Tag:	C-Myc/DDK
Purity:	> 80% as determined by SDS-PAGE and Coomassie blue staining
Concentration:	>0.05 µg/µL as determined by microplate BCA method
Labeling Method:	Labeled with [U- <sup>13</sup> C <sub>6</sub> , <sup>15</sup> N <sub>4</sub> ]-L-Arginine and [U- <sup>13</sup> C <sub>6</sub> , <sup>15</sup> N <sub>2</sub> ]-L-Lysine
Buffer:	25 mM Tris-HCl, 100 mM glycine, pH 7.3
Storage:	Store at -80°C. Avoid repeated freeze-thaw cycles.
Stability:	Stable for 3 months from receipt of products under proper storage and handling conditions.
RefSeq:	<u>NP_056949</u>
RefSeq Size:	3971
RefSeq ORF:	1167
Synonyms:	HsT1341; HUT11; JK; Jk(b); RACH1; RACH2; UT-B1; UT1; UTE
Locus ID:	6563



[View online »](#)

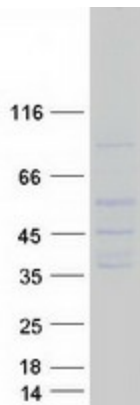
UniProt ID: [Q13336](#), [G0W2N5](#)

Cytogenetics: 18q12.3

Summary: The protein encoded by this gene is a membrane transporter that mediates urea transport in erythrocytes. This gene forms the basis for the Kidd blood group system. [provided by RefSeq, Mar 2009]

Protein Families: Transmembrane

### Product images:



Coomassie blue staining of purified SLC14A1 protein (Cat# [TP308509]). The protein was produced from HEK293T cells transfected with SLC14A1 cDNA clone (Cat# [RC208509]) using MegaTran 2.0 (Cat# [TT210002]).