

Product datasheet for PH308501

LRRC48 (DRC3) (NM_031294) Human Mass Spec Standard

Product data:

Product Type:	Mass Spec Standards
Description:	LRRC48 MS Standard C13 and N15-labeled recombinant protein (NP_112584)
Species:	Human
Expression Host:	HEK293
Expression cDNA Clone or AA Sequence:	RC208501
Predicted MW:	61.1 kDa
Protein Sequence:	>RC208501 protein sequence Red=Cloning site Green=Tags(s)

MNQPCNSMEPRVMDDMLKLAVGDQGPQEEAGQLAKQEGILFKDVLSQLDFRNILRIDNLWQFENLRKL
QLDNNIIIEKIEGLENLAHLVWLDL SFNNIETIEGLDTLVNLEDLSLFNNRISKIDSLDALVKLQVLSLGN
NRIDNMMNIIYLRRFKCLRTL SL SRNP ISEAEDYKMFICAYLPDL MYLDYWRIDDHTKKLAEAKHQYSID
ELKHQENLMQAQLEDEQAQREELEKHKTA FVEHLNGSFLFDSMYAEDSEGNNLSYLPVGGELLE TYKDKF
VIICVNI FEYGLKQQEKRKTELDTFSECVREAIQENQEQQKRKIAKFEEKHLSSL SAIREELELPNIEKM
ILECSADISELFDALMTLEMQLVEQLEETINMFERNIVDMVGLF IENVQSLMAQCRDLENHHHEKLEIS
ISTLEKIVEGDLDELPNDLRALFVDKDTIVNAV GASHDIHLLKIDNREDELVTRINSWCTRLIDRIHKD
EIMRNRKRVK E INQYIDHMQSELDNLECGDILD

TRTRPLEQKLISEEDLAANDILDYKDDDDKV

Tag:	C-Myc/DDK
Purity:	> 80% as determined by SDS-PAGE and Coomassie blue staining
Concentration:	>0.05 µg/µL as determined by microplate BCA method
Labeling Method:	Labeled with [U- ¹³ C ₆ , ¹⁵ N ₄]-L-Arginine and [U- ¹³ C ₆ , ¹⁵ N ₂]-L-Lysine
Buffer:	25 mM Tris-HCl, 100 mM glycine, pH 7.3
Storage:	Store at -80°C. Avoid repeated freeze-thaw cycles.
Stability:	Stable for 3 months from receipt of products under proper storage and handling conditions.
RefSeq:	NP_112584
RefSeq Size:	2094
RefSeq ORF:	1569



[View online »](#)

Synonyms: CFAP134; LRRC48

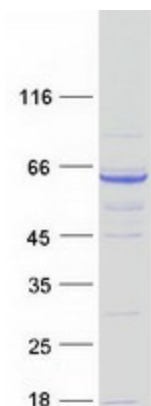
Locus ID: 83450

UniProt ID: [Q9H069](#), [B3KSC6](#)

Cytogenetics: 17p11.2

Summary: Component of the nexin-dynein regulatory complex (N-DRC) a key regulator of ciliary/flagellar motility which maintains the alignment and integrity of the distal axoneme and regulates microtubule sliding in motile axonemes.[UniProtKB/Swiss-Prot Function]

Product images:



Coomassie blue staining of purified DRC3 protein (Cat# [TP308501]). The protein was produced from HEK293T cells transfected with DRC3 cDNA clone (Cat# [RC208501]) using MegaTran 2.0 (Cat# [TT210002]).