

Product datasheet for PH308465

CELF3 (NM_007185) Human Mass Spec Standard

Product data:

Product Type:	Mass Spec Standards
Description:	CELF3 MS Standard C13 and N15-labeled recombinant protein (NP_009116)
Species:	Human
Expression Host:	HEK293
Expression cDNA Clone or AA Sequence:	RC208465
Predicted MW:	50.5 kDa
Protein Sequence:	>RC208465 protein sequence Red=Cloning site Green=Tags(s)

MKEPDAIKL FVGQIPRHLEEKDLKPIFEQFGRIFELTVIKDKYTGLHKGCAFLTYCARDSALKAQSALHE
QKTLPGMNRPIQVKPADSESRGEDRKL FVGMLGKQQTDEDVVRKMFEPFGTIDECTVLRGPDGTSKGCAFV
KFQTHAEAKAAINTLHSSRTLPGASSLVVKFADTEKERGLRRMQQVATQLGMFSPITLQFGAYSAYTQA
LMQQQAALVAHSAYLSPMATMAAVQMQHMAAINANGLIATPITPSSSGTSTPPAIAATPVSAIPAALGVN
GYSQVPTQPTGQPAPDALYPNGVHPYPAQSPAAPVDPLQQAYAGMQHYTAYPAAYSLVAPAFPQPPALVA
QQPPPPPPQQQQQQQQQQQQQREGPDGCNIFIYHLPQEF TDSEILQMFVPGHVISAKVFVDRATNQSK
CFGFVSDNPASAAAIQAMNGFQIGMKRLKVQLKRPKDANRPY

TRTRPLEQKLI SEEDLAANDILDYKDDDDKV

Tag:	C-Myc/DDK
Purity:	> 80% as determined by SDS-PAGE and Coomassie blue staining
Concentration:	>0.05 µg/µL as determined by microplate BCA method
Labeling Method:	Labeled with [U- 13C6, 15N4]-L-Arginine and [U- 13C6, 15N2]-L-Lysine
Buffer:	25 mM Tris-HCl, 100 mM glycine, pH 7.3
Storage:	Store at -80°C. Avoid repeated freeze-thaw cycles.
Stability:	Stable for 3 months from receipt of products under proper storage and handling conditions.
RefSeq:	<u>NP_009116</u>
RefSeq Size:	5615
RefSeq ORF:	1035
Synonyms:	BRUNOL1; CAGH4; ERDA4; ETR-1; TNRC4



[View online »](#)

Locus ID: 11189

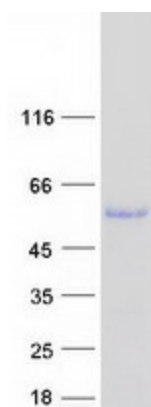
UniProt ID: [Q5SZQ8](#)

Cytogenetics: 1q21.3

Summary: Members of the CELF/BRUNOL protein family contain two N-terminal RNA recognition motif (RRM) domains, one C-terminal RRM domain, and a divergent segment of 160-230 aa between the second and third RRM domains. Members of this protein family regulate pre-mRNA alternative splicing and may also be involved in mRNA editing, and translation. Multiple alternatively spliced transcript variants encoding different isoforms have been identified in this gene. [provided by RefSeq, Feb 2010]

Protein Families: Transcription Factors

Product images:



Coomassie blue staining of purified CELF3 protein (Cat# [TP308465]). The protein was produced from HEK293T cells transfected with CELF3 cDNA clone (Cat# [RC208465]) using MegaTran 2.0 (Cat# [TT210002]).