

Product datasheet for PH308436

SEC63 (NM_007214) Human Mass Spec Standard

Product data:

Product Type:	Mass Spec Standards
Description:	SEC63 MS Standard C13 and N15-labeled recombinant protein (NP_009145)
Species:	Human
Expression Host:	HEK293
Expression cDNA Clone or AA Sequence:	RC208436
Predicted MW:	88 kDa
Protein Sequence:	>RC208436 protein sequence Red=Cloning site Green=Tags(s)

MAGQQFQYDDSGNTFFYFLTSFVGLIVIPATYYLWPRDQNAEQIRLKNIRKVVYGRMWRLLRLLKPQPNIIPTVKKIVLLAGWALFLFLAYKVSKTDREYQEYNPYEVLNLDPGATVAEIKKQYRLLSLKYHPDKGGDEVFMFRIAKAYAALTDEESRKNWEEFGNPDGPQATSFGIALPAWIVDQKNSILVLLVYGLAFMVILPVVVGSWWYRSIRYSGDQILIRTTQIYTYFVYKTRNMDMKRLIMVLGASEFDPQYNKDATS RPTDNILIPQLIREIGSINLKKNEPPLTCPYSLKARVLLL SHLARMKIPETLEEDQQFMLKKCPALLQEMVNVICQLIVMARNREEREFRAPTLASLENCMKLSQMAVQGLQQFKSPLLQLPHIEEDNLRVSNHKKYIKTIQDLVSLKESDRHTLLHFLEDEKYEEMAVLGSFPYVTMDIKSQVLDEEDSNNITVGS LVTVLVKL TRQTMAEVFEKEQSICAAEEQPAEDGQGETNKNRTKGGWQKSKGPKKTA KSKKKKPLKKKPTPVLLPQSKQQKQKQANGVVGNEAAVKEDDEEVSDKGS DSEEEETNRDSQSEKDDGSDRSDREQDEKQNKDDEAEWQELQQSIQRKERALLETKSKITHPVYSLYFPEEKQEWWWLYIADRKEQTLISMPYHVCTLKDTEEVELKFPAPGKPGNYQYTVFLRSDSYMGLDQIKPLKLEVHEAKVPENHPQWDTAIEGDEDEQEDSEGFEDSFEEEEEEEEEDDD

TRTRPLEQKLISEEDLAANDILDYKDDDDKV

Tag:	C-Myc/DDK
Purity:	> 80% as determined by SDS-PAGE and Coomassie blue staining
Concentration:	>0.05 µg/µL as determined by microplate BCA method
Labeling Method:	Labeled with [U- 13C6, 15N4]-L-Arginine and [U- 13C6, 15N2]-L-Lysine
Buffer:	25 mM Tris-HCl, 100 mM glycine, pH 7.3
Storage:	Store at -80°C. Avoid repeated freeze-thaw cycles.
Stability:	Stable for 3 months from receipt of products under proper storage and handling conditions.
RefSeq:	<u>NP_009145</u>



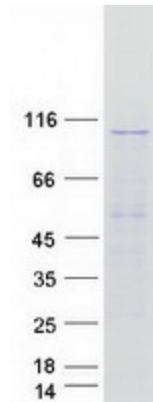
[View online »](#)

RefSeq Size:	6500
RefSeq ORF:	2280
Synonyms:	DNAJC23; ERdj2; PCLD2; PRO2507; SEC63L
Locus ID:	11231
UniProt ID:	Q9UGP8 , A0A0S2Z5M1
Cytogenetics:	6q21

Summary: The Sec61 complex is the central component of the protein translocation apparatus of the endoplasmic reticulum (ER) membrane. The protein encoded by this gene and SEC62 protein are found to be associated with ribosome-free SEC61 complex. It is speculated that Sec61-Sec62-Sec63 may perform post-translational protein translocation into the ER. The Sec61-Sec62-Sec63 complex might also perform the backward transport of ER proteins that are subject to the ubiquitin-proteasome-dependent degradation pathway. The encoded protein is an integral membrane protein located in the rough ER. [provided by RefSeq, Jul 2008]

Protein Families: Transmembrane

Product images:



Coomassie blue staining of purified SEC63 protein (Cat# [TP308436]). The protein was produced from HEK293T cells transfected with SEC63 cDNA clone (Cat# [RC208436]) using MegaTran 2.0 (Cat# [TT210002]).