

Product datasheet for PH308422

LRRC28 (NM_144598) Human Mass Spec Standard

Product data:

Product Type:	Mass Spec Standards
Description:	LRRC28 MS Standard C13 and N15-labeled recombinant protein (NP_653199)
Species:	Human
Expression Host:	HEK293
Expression cDNA Clone or AA Sequence:	RC208422
Predicted MW:	41.9 kDa
Protein Sequence:	>RC208422 protein sequence Red=Cloning site Green=Tags(s)

MASELCKTISVARLEKHKNFLNYRNLHFFLELLKDEGLQYLERLYMKRNSLTSLPENLAQKLPNLVEL
YLHSNNIVVPEAIGSLVKLQCLDLSDNALEIVCPEIGRLRALRHLRLANNQLQFLPPEVGDKEKELQTLT
ISTNRLLTLPERLHMCLSLQYLTVDNRNLWYVPRHLCQLPSLNELSMAGNRLAFLPLDLGRSRELQYVVV
DNNIHLKGLPSYLYNKVIGCSGCGAPIQVSEVKLLSFSSGQRTVFLPAEVKAIGTEHDHVLPLQELAMRG
LYHTYHSLKDLNFLSPISLPRSLLELLHCPLGHCHRCEPMFTIVYPKLFPLRETPMAGLHQWKTTSF
VAYCCSTQCLQTFDLLS

TRTRPLEQKLISEEDLAANDILDYKDDDDKV

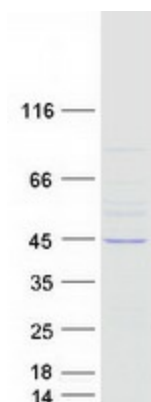
Tag:	C-Myc/DDK
Purity:	> 80% as determined by SDS-PAGE and Coomassie blue staining
Concentration:	>0.05 µg/µL as determined by microplate BCA method
Labeling Method:	Labeled with [U- ¹³ C ₆ , ¹⁵ N ₄]-L-Arginine and [U- ¹³ C ₆ , ¹⁵ N ₂]-L-Lysine
Buffer:	25 mM Tris-HCl, 100 mM glycine, pH 7.3
Storage:	Store at -80°C. Avoid repeated freeze-thaw cycles.
Stability:	Stable for 3 months from receipt of products under proper storage and handling conditions.
RefSeq:	<u>NP_653199</u>
RefSeq Size:	1569
RefSeq ORF:	1101
Locus ID:	123355
UniProt ID:	<u>Q86X40</u>



[View online »](#)

Cytogenetics: 15q26.3

Product images:



Coomassie blue staining of purified LRRC28 protein (Cat# [TP308422]). The protein was produced from HEK293T cells transfected with LRRC28 cDNA clone (Cat# [RC208422]) using MegaTran 2.0 (Cat# [TT210002]).