

## Product datasheet for PH308410

### EMP1 (NM\_001423) Human Mass Spec Standard

#### Product data:

|                                       |  |
|---------------------------------------|--|
| Product Type:                         | Mass Spec Standards  |
| Description:                          | EMP1 MS Standard C13 and N15-labeled recombinant protein (NP_001414)   |
| Species:                              | Human  |
| Expression Host:                      | HEK293   |
| Expression cDNA Clone or AA Sequence: | RC208410   |
| Predicted MW:                         | 17.6 kDa   |
| Protein Sequence:                     | >RC208410 protein sequence<br>Red=Cloning site Green=Tags(s)<br><br>MLVLLAGIFVVHIATVIMLFVSTIANVWLVSNITVDASVGLWKNCTNISCSDSL SYASEDALKTVQAFMIL<br>SIIFCVIALLVFVFLFTMEKGNRFFLSGATTLVCWLCILVGVSIYTSHYANRDGTQYHHGYSYILGWIC<br>FCFSFIIGVLYLVLRKK<br><br>TRTRPLEQKLI SEEDLAANDILDYKDDDDKV |
| Tag:                                  | C-Myc/DDK  |
| Purity:                               | > 80% as determined by SDS-PAGE and Coomassie blue staining  |
| Concentration:                        | >0.05 µg/µL as determined by microplate BCA method   |
| Labeling Method:                      | Labeled with [U- <sup>13</sup> C <sub>6</sub> , <sup>15</sup> N <sub>4</sub> ]-L-Arginine and [U- <sup>13</sup> C <sub>6</sub> , <sup>15</sup> N <sub>2</sub> ]-L-Lysine   |
| Buffer:                               | 25 mM Tris-HCl, 100 mM glycine, pH 7.3   |
| Storage:                              | Store at -80°C. Avoid repeated freeze-thaw cycles.   |
| Stability:                            | Stable for 3 months from receipt of products under proper storage and handling conditions.   |
| RefSeq:                               | <a href="#">NP_001414</a>  |
| RefSeq Size:                          | 2804   |
| RefSeq ORF:                           | 471  |
| Synonyms:                             | CL-20; EMP-1; TMP  |
| Locus ID:                             | 2012   |
| UniProt ID:                           | <a href="#">P54849</a> , <a href="#">A0A024RAT0</a>  |

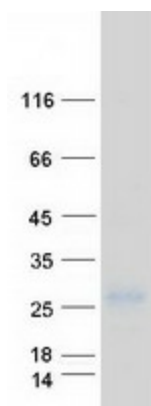


[View online »](#)

Cytogenetics: 12p13.1

Protein Families: Transmembrane

### Product images:



Coomassie blue staining of purified EMP1 protein (Cat# [TP308410]). The protein was produced from HEK293T cells transfected with EMP1 cDNA clone (Cat# [RC208410]) using MegaTran 2.0 (Cat# [TT210002]).