

## Product datasheet for PH308397

### AMH (NM\_000479) Human Mass Spec Standard

#### Product data:

Product Type:	Mass Spec Standards
Description:	AMH MS Standard C13 and N15-labeled recombinant protein (NP_000470)
Species:	Human
Expression Host:	HEK293
Expression cDNA Clone or AA Sequence:	RC208397
Predicted MW:	59.17 kDa
Protein Sequence:	>RC208397 representing NM_000479 Red=Cloning site Green=Tags(s)

MRDLPLTSLALVLSALGALLGTEALRAEPAVGTSGLIIFREDLDWPPGSPQEPLCLVALGGDSNGSSSPL  
RVVGALSAYEQAF LGAVQRARWGPRDLATFGVCNTGDRQAALPSLRRLGAWLRDPGGQRLVVLHLEEVTV  
EPTPSLRFQEP PPGGAGPPELALLVLYPGPGPEVTVTRAGLPGAQSLCPSRDTRYLVLA VDRPAGAWRGS  
GLALTLQPRGEDSRLSTARLQALLFGDDHRCFTRMTPALLLLPRSEPA LPAHGQLDTPVFP PPRPSAEL  
EESPPSADPFLETLTRLVRALRVPPARASAPRLALDPDALAGFPQGLVNLSDPAALERLLDGEELLLLLL  
RPTAATTGDPAPLHDPTSAPWATALARRVAAELQAAAAELRSLPGLPPATAPLLARLLALCPGGPGLGD  
PLRALLLLKALQGLRVEWRGRDPRGPGRAQRSAGATAADGPCALRELSVDLRAERSVLIPETYQANNCQG  
VCGWPQSDRNPRYGNHVLLLLKMQARGAALARPPCCVPTAYAGKLLISLSEERISAHHVPMNVATECGCR

TRTRPLEQKLI SEEDLAANDILDYKDDDDKV

Tag:	C-Myc/DDK
Purity:	> 80% as determined by SDS-PAGE and Coomassie blue staining
Concentration:	>0.05 µg/µL as determined by microplate BCA method
Labeling Method:	Labeled with [U- 13C6, 15N4]-L-Arginine and [U- 13C6, 15N2]-L-Lysine
Buffer:	25 mM Tris-HCl, 100 mM glycine, pH 7.3
Storage:	Store at -80°C. Avoid repeated freeze-thaw cycles.
Stability:	Stable for 3 months from receipt of products under proper storage and handling conditions.
RefSeq:	<a href="#">NP_000470</a>
RefSeq Size:	2008
RefSeq ORF:	1680



[View online »](#)

**Synonyms:** MIF; MIS

**Locus ID:** 268

**UniProt ID:** [P03971](#)

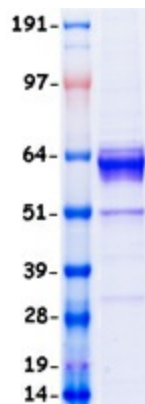
**Cytogenetics:** 19p13.3

**Summary:** This gene encodes a secreted ligand of the TGF-beta (transforming growth factor-beta) superfamily of proteins. Ligands of this family bind various TGF-beta receptors leading to recruitment and activation of SMAD family transcription factors that regulate gene expression. The encoded preproprotein is proteolytically processed to generate N- and C-terminal cleavage products that homodimerize and associate to form a biologically active noncovalent complex. This complex binds to the anti-Mullerian hormone receptor type 2 and causes the regression of Mullerian ducts in the male embryo that would otherwise differentiate into the uterus and fallopian tubes. This protein also plays a role in Leydig cell differentiation and function and follicular development in adult females. Mutations in this gene result in persistent Mullerian duct syndrome. [provided by RefSeq, Jul 2016]

**Protein Families:** Druggable Genome, Secreted Protein

**Protein Pathways:** Cytokine-cytokine receptor interaction, TGF-beta signaling pathway

### Product images:



Coomassie blue staining of purified AMH protein (Cat# [TP308397]). The protein was produced from HEK293T cells transfected with AMH cDNA clone (Cat# [RC208397]) using MegaTran 2.0 (Cat# [TT210002]).