

## Product datasheet for PH308396

### SHOC2 (NM\_007373) Human Mass Spec Standard

#### Product data:

Product Type:	Mass Spec Standards
Description:	SHOC2 MS Standard C13 and N15-labeled recombinant protein (NP_031399)
Species:	Human
Expression Host:	HEK293
Expression cDNA Clone or AA Sequence:	RC208396
Predicted MW:	64.9 kDa
Protein Sequence:	>RC208396 protein sequence Red=Cloning site Green=Tags(s)

MSSSLGKEKDSKEKDPKVPSAKEREKEAKASGGFGKESKEKEPKTKGKDAKDGKKDSSAAQPGVAFSVDN  
TIKRPNPAPGTRKSSNAEVIKELNKREENSMRLDL SKRSIHILPSSIKELTQLTELYL YSNKLQSLPA  
EVGCLVNLMTLALSENSTSLPDSLNLKLRMLDLRHNKLRIPSVVYRLDSLTTLYLRFNRITTEKD  
IKNL SKLSML SIRENKIKQLPAEIGELCNLITLVAHNQLEHLPKEIGNCTQITNLDLQHNELLDLPDTI  
GNLSSL SRLGLRYNRLSAIPRSLAKCSALEELNLENNNISTLPESLLSSLVKNLSLTLARNCFQLYPVGG  
PSQFSTIYSLNMEHNRINKIPFGIFSRKVL SKLNMKDNQLTSLPLDFGTWTSMVELNLATNQLTKIPED  
VSGLVSLVLEVLILSNLLKGLPHGLGNLRKLRLELDLEENKLESPLNEIAYLKDLQKLVLTNNQLTTLPRGI  
GHLTNLTHLGLGENLLTHLPEEIGTLENLEELYLNDNPNLHSLPFELALCSKLSIMSIENCPLSHLPPQI  
VAGGPSFIIQFLKMQGPYRAMV

TRTRPLEQKLI SEEDLAANDILDYKDDDDKV

Tag:	C-Myc/DDK
Purity:	> 80% as determined by SDS-PAGE and Coomassie blue staining
Concentration:	>0.05 µg/µL as determined by microplate BCA method
Labeling Method:	Labeled with [U- <sup>13</sup> C <sub>6</sub> , <sup>15</sup> N <sub>4</sub> ]-L-Arginine and [U- <sup>13</sup> C <sub>6</sub> , <sup>15</sup> N <sub>2</sub> ]-L-Lysine
Buffer:	25 mM Tris-HCl, 100 mM glycine, pH 7.3
Storage:	Store at -80°C. Avoid repeated freeze-thaw cycles.
Stability:	Stable for 3 months from receipt of products under proper storage and handling conditions.
RefSeq:	<a href="#">NP_031399</a>
RefSeq Size:	3962
RefSeq ORF:	1746



[View online »](#)

**Synonyms:** NSLH1; SIAA0862; SOC2; SUR8

**Locus ID:** 8036

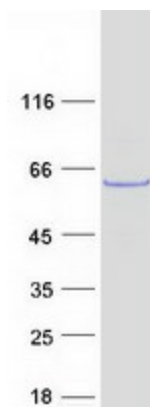
**UniProt ID:** [Q9UQ13](#)

**Cytogenetics:** 10q25.2

**Summary:** This gene encodes a protein that consists almost entirely of leucine-rich repeats, a domain implicated in protein-protein interactions. The protein may function as a scaffold linking RAS to downstream signal transducers in the RAS/ERK MAP kinase signaling cascade. Mutations in this gene have been associated with Noonan-like syndrome with loose anagen hair. [provided by RefSeq, May 2010]

**Protein Families:** Druggable Genome

### Product images:



Coomassie blue staining of purified SHOC2 protein (Cat# [TP308396]). The protein was produced from HEK293T cells transfected with SHOC2 cDNA clone (Cat# [RC208396]) using MegaTran 2.0 (Cat# [TT210002]).