

Product datasheet for PH308388

QPCT (NM_012413) Human Mass Spec Standard

Product data:

Product Type:	Mass Spec Standards
Description:	QPCT MS Standard C13 and N15-labeled recombinant protein (NP_036545)
Species:	Human
Expression Host:	HEK293
Expression cDNA Clone or AA Sequence:	RC208388
Predicted MW:	40.9 kDa
Protein Sequence:	>RC208388 protein sequence Red =Cloning site Green =Tags(s) MAGGRHRRVVGTLHLLLLVAALPWSRQVSPSASAWPEEKNYHQPAILNSSALRQIAEGTSISEMWQNDL QPLLIERYPGSPGSYAARQHIMQRIQRLQADWVLEIDTFLSQTPYGYRSFSNIIISTLNPTAKRHLVLACH YDSKYFSHWNNRVFVGATDSAVPCAMMLELARALDKKLLSLKTVSDSKPDLSQLIFFDGEEAFLHWSPQ DSL YGSRHLAAKMASTPHPPGARGTSQLHGMDLLVLLDLIGAPNPTFPNFFPNSARWFERLQAIIEHELHE LGLLKDHSLEGRYFQNYSYGGVIQDDHIFLRRGVPVLHLIPSPFPEVWHTMDDNEENLDESTIDNLNKI LQVFVLEYLHL TRTRPLEQKLI SEEDLAANDILDYKDDDDKV
Tag:	C-Myc/DDK
Purity:	> 80% as determined by SDS-PAGE and Coomassie blue staining
Concentration:	>0.05 µg/µL as determined by microplate BCA method
Labeling Method:	Labeled with [U- ¹³ C ₆ , ¹⁵ N ₄]-L-Arginine and [U- ¹³ C ₆ , ¹⁵ N ₂]-L-Lysine
Buffer:	25 mM Tris-HCl, 100 mM glycine, pH 7.3
Storage:	Store at -80°C. Avoid repeated freeze-thaw cycles.
Stability:	Stable for 3 months from receipt of products under proper storage and handling conditions.
RefSeq:	<u>NP_036545</u>
RefSeq Size:	1719
RefSeq ORF:	1083
Synonyms:	GCT; QC; sQC
Locus ID:	25797



[View online »](#)

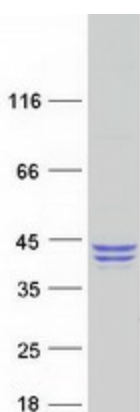
UniProt ID: [Q16769](#)

Cytogenetics: 2p22.2

Summary: This gene encodes human pituitary glutaminyl cyclase, which is responsible for the presence of pyroglutamyl residues in many neuroendocrine peptides. The amino acid sequence of this enzyme is 86% identical to that of bovine glutaminyl cyclase. [provided by RefSeq, Jul 2008]

Protein Families: Protease

Product images:



Coomassie blue staining of purified QPCT protein (Cat# [TP308388]). The protein was produced from HEK293T cells transfected with QPCT cDNA clone (Cat# [RC208388]) using MegaTran 2.0 (Cat# [TT210002]).