

## Product datasheet for PH308383

### ZBED5 (NM\_021211) Human Mass Spec Standard

#### Product data:

Product Type:	Mass Spec Standards
Description:	ZBED5 MS Standard C13 and N15-labeled recombinant protein (NP_067034)
Species:	Human
Expression Host:	HEK293
Expression cDNA Clone or AA Sequence:	RC208383
Predicted MW:	56.1 kDa
Protein Sequence:	>RC208383 protein sequence Red=Cloning site Green=Tags(s)

MIAPLLCILSYNFNTFAILNVYSKLTMFCTTNSLPMDLLLKQGSLLKQEVESFCYQIVSESNDQKVGILQS  
EDKQLQPSVSKKSEGELSRVKFISNSNKITFSKKPKRRKYDESYLSFGFTYFGNRDAPHAQCVLCKKILS  
NSSLAPSKLRRHLETKHAAYKDKDISFFKQHLDSPENNKPPTPKIVNTDNEASATEASVNSYHIALSGEA  
HTIGELLIKPCAQDVVMMRFDEQYSKKIDAVQLSNSTVARRIKDLAADIEEELVCRLKICDGFSLQLDES  
ADVSGLAVLLVFRYRFNKSIEEDLLLCESLQSNATGEEIFNCINSFMQKHEIEWEKVDVCSASRAVD  
GKIAEAVTLIKYVAPESTSSHCLLYRHALAVKIMPTSLKNVLDQAVQIINYIKARPHQSRLKILCEEMG  
AQHTALLLNTEVRWLSRGKVLVRLFELRRELLVFMDSAFRLSDCLTNSSWLLRLAYLADIFTKLNEVNLS  
MQGKM

TRTRPLEQKLI SEEDLAANDILDYKDDDDKV

Tag:	C-Myc/DDK
Purity:	> 80% as determined by SDS-PAGE and Coomassie blue staining
Concentration:	>0.05 µg/µL as determined by microplate BCA method
Labeling Method:	Labeled with [U- <sup>13</sup> C <sub>6</sub> , <sup>15</sup> N <sub>4</sub> ]-L-Arginine and [U- <sup>13</sup> C <sub>6</sub> , <sup>15</sup> N <sub>2</sub> ]-L-Lysine
Buffer:	25 mM Tris-HCl, 100 mM glycine, pH 7.3
Storage:	Store at -80°C. Avoid repeated freeze-thaw cycles.
Stability:	Stable for 3 months from receipt of products under proper storage and handling conditions.
RefSeq:	<u><a href="#">NP_067034</a></u>
RefSeq Size:	2756
RefSeq ORF:	546



[View online »](#)

Synonyms: Buster1

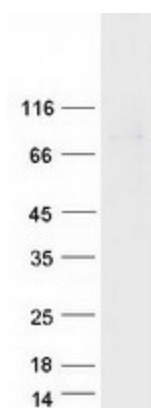
Locus ID: 58486

UniProt ID: [Q49AG3](#)

Cytogenetics: 11p15.4

**Summary:** This gene is unusual in that its coding sequence is mostly derived from Charlie-like DNA transposon; however, it does not appear to be an active DNA transposon as it is not flanked by terminal inverted repeats. The encoded protein is conserved among the mammalian Laurasiatheria branch. Multiple alternatively spliced variants, encoding the same protein, have been identified. [provided by RefSeq, Jan 2009]

### Product images:



Coomassie blue staining of purified ZBED5 protein (Cat# [TP308383]). The protein was produced from HEK293T cells transfected with ZBED5 cDNA clone (Cat# [RC208383]) using MegaTran 2.0 (Cat# [TT210002]).