

## Product datasheet for PH308381

### LXR beta (NR1H2) (NM\_007121) Human Mass Spec Standard

#### Product data:

Product Type:	Mass Spec Standards
Description:	NR1H2 MS Standard C13 and N15-labeled recombinant protein (NP_009052)
Species:	Human
Expression Host:	HEK293
Expression cDNA Clone or AA Sequence:	RC208381
Predicted MW:	51.1 kDa
Protein Sequence:	>RC208381 protein sequence Red=Cloning site Green=Tags(s)

MSSPTTSSLDTPLPGNGPPQPGAPSSSPTVKEEGPEPWPGPDVPGTDEASSACSTDWVDPPEEPE  
RKRKKGPAKMLGHELRCVCGDKASGFHYNVLSCEGCKGFFRRSVVRRGGARRYACRGGTCQMDAFMRRK  
CQQCRLRKCKEAGMREQCVLSEEQIRKKKIRKQQQESQSQSPVGPQGSSSSASGPGASPGGSEAGSQ  
GSGEGEVQLTAAQELMIQQLVAAQLQCNKRSFSDQPKVTPWPLGADPQSRDARQRFQFAHFTELAIISVQ  
EIVDFAKQVPGFLQLGREDQIALLKASTIEIMLLETARRYNHETECITFLKDFTYSKDDFHRAGLQVEFI  
NPIFEFSRAMRRLGLDDAEYALLIAINIFSDRPNVQEPGRVEALQQPYVEALLSYTRIKRPQDQLRFPR  
MLMKLVSLRTLSSVHSEQVFALRLQDKKLPLLSEIWDVHE

TRTRPLEQKLISEEDLAANDILDYKDDDDKV

Tag:	C-Myc/DDK
Purity:	> 80% as determined by SDS-PAGE and Coomassie blue staining
Concentration:	>0.05 µg/µL as determined by microplate BCA method
Labeling Method:	Labeled with [U- <sup>13</sup> C <sub>6</sub> , <sup>15</sup> N <sub>4</sub> ]-L-Arginine and [U- <sup>13</sup> C <sub>6</sub> , <sup>15</sup> N <sub>2</sub> ]-L-Lysine
Buffer:	25 mM Tris-HCl, 100 mM glycine, pH 7.3
Storage:	Store at -80°C. Avoid repeated freeze-thaw cycles.
Stability:	Stable for 3 months from receipt of products under proper storage and handling conditions.
RefSeq:	<u>NP_009052</u>
RefSeq Size:	2093
RefSeq ORF:	1383
Synonyms:	LXR-b; LXRb; NER; NER-I; RIP15; UNR



[View online »](#)

Locus ID: 7376

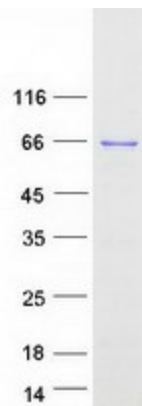
UniProt ID: [P55055](#), [F1D8P7](#)

Cytogenetics: 19q13.33

**Summary:** The liver X receptors, LXRA (NR1H3; MIM 602423) and LXRβ, form a subfamily of the nuclear receptor superfamily and are key regulators of macrophage function, controlling transcriptional programs involved in lipid homeostasis and inflammation. The inducible LXRA is highly expressed in liver, adrenal gland, intestine, adipose tissue, macrophages, lung, and kidney, whereas LXRβ is ubiquitously expressed. Ligand-activated LXRs form obligate heterodimers with retinoid X receptors (RXRs; see MIM 180245) and regulate expression of target genes containing LXR response elements (summary by Korf et al., 2009 [PubMed 19436111]).[supplied by OMIM, Jan 2010]

**Protein Families:** Druggable Genome, Nuclear Hormone Receptor, Transcription Factors

### Product images:



Coomassie blue staining of purified NR1H2 protein (Cat# [TP308381]). The protein was produced from HEK293T cells transfected with NR1H2 cDNA clone (Cat# [RC208381]) using MegaTran 2.0 (Cat# [TT210002]).