

Product datasheet for PH308370

CCL14 (NM_032963) Human Mass Spec Standard

Product data:

| | |
|---------------------------------------|--|
| Product Type: | Mass Spec Standards |
| Description: | CCL14 MS Standard C13 and N15-labeled recombinant protein (NP_116739) |
| Species: | Human |
| Expression Host: | HEK293 |
| Expression cDNA Clone or AA Sequence: | RC208370 |
| Predicted MW: | 10.7 kDa |
| Protein Sequence: | >RC208370 protein sequence Red=Cloning site Green=Tags(s) MKISVAAIPFFLLITIALGKTESSSRGPYHPSECCFTYTTYKIPRQRIMDYETNSQCSKPGIVFITKR GHSVCTNPSDKWVQDYIKDMKEN TRTRPLEQKLISEEDLAANDILDYKDDDDKV |
| Tag: | C-Myc/DDK |
| Purity: | > 80% as determined by SDS-PAGE and Coomassie blue staining |
| Concentration: | >0.05 µg/µL as determined by microplate BCA method |
| Labeling Method: | Labeled with [U- 13C6, 15N4]-L-Arginine and [U- 13C6, 15N2]-L-Lysine |
| Buffer: | 25 mM Tris-HCl, 100 mM glycine, pH 7.3 |
| Storage: | Store at -80°C. Avoid repeated freeze-thaw cycles. |
| Stability: | Stable for 3 months from receipt of products under proper storage and handling conditions. |
| RefSeq: | NP_116739 |
| RefSeq Size: | 506 |
| RefSeq ORF: | 279 |
| Synonyms: | CC-1; CC-3; CKB1; HCC-1; HCC-1(1-74); HCC-1/HCC-3; HCC-3; MCIF; NCC-2; NCC2; SCYA14; SCYL2; SY14 |
| Locus ID: | 6358 |
| UniProt ID: | Q16627 |



[View online »](#)

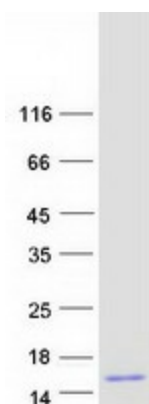
Cytogenetics: 17q12

Summary: This gene, chemokine (C-C motif) ligand 14, is one of several CC cytokine genes clustered on 17q11.2. The CC cytokines are secreted proteins characterized by two adjacent cysteines. The cytokine encoded by this gene induces changes in intracellular calcium concentration and enzyme release in monocytes. Multiple transcript variants encoding different isoforms have been found for this gene. Read-through transcripts are also expressed that include exons from the upstream cytokine gene, chemokine (C-C motif) ligand 15, and are represented as GeneID: 348249. [provided by RefSeq, Dec 2009]

Protein Families: Druggable Genome, Secreted Protein

Protein Pathways: Chemokine signaling pathway, Cytokine-cytokine receptor interaction

Product images:



Coomassie blue staining of purified CCL14 protein (Cat# [TP308370]). The protein was produced from HEK293T cells transfected with CCL14 cDNA clone (Cat# [RC208370]) using MegaTran 2.0 (Cat# [TT210002]).