

Product datasheet for PH308351

PREB (NM_013388) Human Mass Spec Standard

Product data:

Product Type:	Mass Spec Standards
Description:	PREB MS Standard C13 and N15-labeled recombinant protein (NP_037520)
Species:	Human
Expression Host:	HEK293
Expression cDNA Clone or AA Sequence:	RC208351
Predicted MW:	45.5 kDa
Protein Sequence:	>RC208351 protein sequence Red=Cloning site Green=Tags(s)

MGRRRAPELYRAPFFLYALQVDPSTGLLIAAGGGGAAKTGIKNGVHFLQLELINGRLSASLLHSHDTETR
ATMNLALAGDILAAAGQDAHCQLLRFQAHQQGNKAEKAGSKEQGPRQRKGAAPAEKKCGAETQHEGLELR
VENLQAVQTDFFSSDPLQKVCFNHDNTLLATGGTDGYVRVWVKVPSLEKVFKAHEGEIEDLALGPDGKL
VTVGRDLKASVWQKQDLVTQLHWQENGPTFSSTPYRYQACRFQVDPQAPGLRFLTVQIPHKRLRQPPPC
YLTAWDGSNFLPLRTKSCGHEVVSCLDVSESGTFLGLGTVTGSVAIYIAFSLQCLYYVREAHGIVVTDVA
FLPEKGRGPELLGSHETALFSVAVDSRCQLHLLPSRRSVPVWLLLLLCVGLIIVTILLLQSAFPGFL

TRTRPLEQKLISEEDLAANDILDYKDDDDKV

Tag:	C-Myc/DDK
Purity:	> 80% as determined by SDS-PAGE and Coomassie blue staining
Concentration:	>0.05 µg/µL as determined by microplate BCA method
Labeling Method:	Labeled with [U- ¹³ C ₆ , ¹⁵ N ₄]-L-Arginine and [U- ¹³ C ₆ , ¹⁵ N ₂]-L-Lysine
Buffer:	25 mM Tris-HCl, 100 mM glycine, pH 7.3
Storage:	Store at -80°C. Avoid repeated freeze-thaw cycles.
Stability:	Stable for 3 months from receipt of products under proper storage and handling conditions.
RefSeq:	<u>NP_037520</u>
RefSeq Size:	2211
RefSeq ORF:	1251
Synonyms:	SEC12
Locus ID:	10113



[View online »](#)

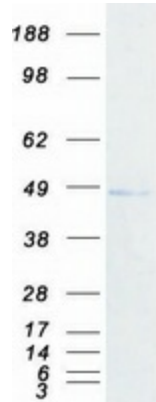
UniProt ID: [Q9HCU5](#)

Cytogenetics: 2p23.3

Summary: This gene encodes a protein that specifically binds to a Pit1-binding element of the prolactin (PRL) promoter. This protein may act as a transcriptional regulator and is thought to be involved in some of the developmental abnormalities observed in patients with partial trisomy 2p. This gene overlaps the abhydrolase domain containing 1 (ABHD1) gene on the opposite strand. [provided by RefSeq, Jul 2008]

Protein Families: Transcription Factors, Transmembrane

Product images:



Coomassie blue staining of purified PREB protein (Cat# [TP308351]). The protein was produced from HEK293T cells transfected with PREB cDNA clone (Cat# [RC208351]) using MegaTran 2.0 (Cat# [TT210002]).