

Product datasheet for PH308330

XRCC2 (NM_005431) Human Mass Spec Standard

Product data:

Product Type:	Mass Spec Standards
Description:	XRCC2 MS Standard C13 and N15-labeled recombinant protein (NP_005422)
Species:	Human
Expression Host:	HEK293
Expression cDNA Clone or AA Sequence:	RC208330
Predicted MW:	32 kDa
Protein Sequence:	>RC208330 protein sequence Red=Cloning site Green=Tags(s) MCSAFHRAESGTELLARLEGRSSLKEIEPNLFADEDSPVHGDILEFHGPEGTGKTEMLYHLTARCILPKS EGGLEVEVLFIDTDYHFDMLRLVTILEHRLSQSSEEIIKYCLGRFFLVYCSSSTHLLLTLYSLESFCSH PSLCLLILDLSAFYWIDRVNNGGESVNLQESTLRKCSQCLEKLVNDYRLVLFATTQTIMQKASSSSEEPS HASRRLCDVDIDYRPLYCKAWQQLVKHRMFFSKQDSSQSNQFSLVSRCLKSNLKKHFFIIGESGVEFC TRTRPLEQKLI SEEDLAANDILDYKDDDDKV
Tag:	C-Myc/DDK
Purity:	> 80% as determined by SDS-PAGE and Coomassie blue staining
Concentration:	>0.05 µg/µL as determined by microplate BCA method
Labeling Method:	Labeled with [U- ¹³ C ₆ , ¹⁵ N ₄]-L-Arginine and [U- ¹³ C ₆ , ¹⁵ N ₂]-L-Lysine
Buffer:	25 mM Tris-HCl, 100 mM glycine, pH 7.3
Storage:	Store at -80°C. Avoid repeated freeze-thaw cycles.
Stability:	Stable for 3 months from receipt of products under proper storage and handling conditions.
RefSeq:	NP_005422
RefSeq Size:	3094
RefSeq ORF:	840
Synonyms:	FANCU; POF17; SPGF50
Locus ID:	7516
UniProt ID:	O43543 , A0A384MEK2



[View online »](#)

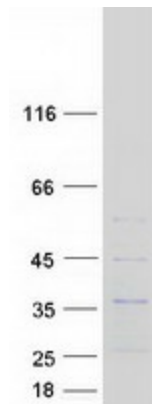
Cytogenetics: 7q36.1

Summary: This gene encodes a member of the RecA/Rad51-related protein family that participates in homologous recombination to maintain chromosome stability and repair DNA damage. This gene is involved in the repair of DNA double-strand breaks by homologous recombination and it functionally complements Chinese hamster *irs1*, a repair-deficient mutant that exhibits hypersensitivity to a number of different DNA-damaging agents. [provided by RefSeq, Jul 2008]

Protein Families: Druggable Genome

Protein Pathways: Homologous recombination

Product images:



Coomassie blue staining of purified XRCC2 protein (Cat# [TP308330]). The protein was produced from HEK293T cells transfected with XRCC2 cDNA clone (Cat# [RC208330]) using MegaTran 2.0 (Cat# [TT210002]).