

Product datasheet for PH308317

PTOV1 (NM_017432) Human Mass Spec Standard

Product data:

Product Type:	Mass Spec Standards
Description:	PTOV1 MS Standard C13 and N15-labeled recombinant protein (NP_059128)
Species:	Human
Expression Host:	HEK293
Expression cDNA Clone or AA Sequence:	RC208317
Predicted MW:	46.7 kDa
Protein Sequence:	>RC208317 representing NM_017432 Red=Cloning site Green=Tags(s) MVRPRRAPYRSGAGGPLGGRGRPPRPLVVRVRSRSPASPRGPQPPIRARSAPMEGARVFGALGPIG PSSPGLTLGGLAVSEHRLSNKLLAWSGVLEWQEKRRPYSDSTAKLKRTLPCQAYVNQGENLETDQWPQKL IMQLIPQQLLTLGPLFRNSQLAQFHFTNRDCDSLKGLCRIMGNGFAGCMLFPHISPCEVRLMLLYSSK KKIFMGLIPYDQSGFVSAIRQVITTRKQAVGPGGVNSGPVQIVNNKFLAWSGVMEWQEPREPNRSKRW LPSHVYVNQGEILRTEQWPRKLYMQLIPQQLLTLVPLFRNSRLVQFHFTKDLETLSLSCRIMDNFAGC VHFSYKASCEIRVLMMLYSSEKIFIGLIPHDQGNFVNGIRRVIANQQQVLQRNLEQEQQQRGMGG TRTRPLEQKLISEEDLAANDILDYKDDDDKV
Tag:	C-Myc/DDK
Purity:	> 80% as determined by SDS-PAGE and Coomassie blue staining
Concentration:	>0.05 µg/µL as determined by microplate BCA method
Labeling Method:	Labeled with [U- ¹³ C ₆ , ¹⁵ N ₄]-L-Arginine and [U- ¹³ C ₆ , ¹⁵ N ₂]-L-Lysine
Buffer:	25 mM Tris-HCl, 100 mM glycine, pH 7.3
Storage:	Store at -80°C. Avoid repeated freeze-thaw cycles.
Stability:	Stable for 3 months from receipt of products under proper storage and handling conditions.
RefSeq:	NP_059128
RefSeq Size:	1884
RefSeq ORF:	1248
Synonyms:	ACID2; PTOV-1
Locus ID:	53635



[View online »](#)

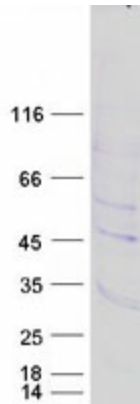
UniProt ID: [Q86YD1](#)

Cytogenetics: 19q13.33

Summary: This gene encodes a protein that was found to be overexpressed in prostate adenocarcinomas. The encoded protein was found to interact with the lipid raft protein flotillin-1 and shuttle it from the cytoplasm to the nucleus in a cell cycle dependent manner. Alternative splicing of this gene results in multiple transcript variants. [provided by RefSeq, Feb 2015]

Protein Families: Druggable Genome

Product images:



Coomassie blue staining of purified PTOV1 protein (Cat# [TP308317]). The protein was produced from HEK293T cells transfected with PTOV1 cDNA clone (Cat# [RC208317]) using MegaTran 2.0 (Cat# [TT210002]).