

Product datasheet for PH308309

Syntrophin (SNTB2) (NM_006750) Human Mass Spec Standard

Product data:

Product Type:	Mass Spec Standards
Description:	SNTB2 MS Standard C13 and N15-labeled recombinant protein (NP_006741)
Species:	Human
Expression Host:	HEK293
Expression cDNA Clone or AA Sequence:	RC208309
Predicted MW:	57.8 kDa
Protein Sequence:	>RC208309 representing NM_006750 Red=Cloning site Green=Tags(s)

MRVAAATAAGAGPAMAVWTRATKAGLVELLLRERWVRVVAELSGESLSLTGDAAAAEALGPAAAAF
NGLPNGGGAGDSLPGSPSRGLGPPSPAPPGRPAGEAGASPPVRRVRVVKQEAGGLGISIKGGRENMPI
LISKIFPGLAADQSRALRLGDAILSVNGTDLRQATHDQAVQALKRAGKEVLEVKFIREVTPYIKKPSLV
SDLPWEGAAPQSPSFGSEDSGSPKHQNSTKDRKI IPLKMCFAARNLSMPDLENRLIELHSPDSRNTLIL
RCKDTATAHSWFVAIHTNIMALLPQVLAELNAMLGATSTAGGSKEVKHIAWLAEQAKLDGGRQQRVPLM
AVTEKDLLLYDCMPWTRDAWASPCHSYPLVATRLVHSGSGCRSPSLGSDLTFATRTRGSRQGIEMHLFRVE
THRDLSSWTRILVQGCHAAAELIKEVSLGCMLNGQEVRLTIHYENGFTISRENGGSSILYRYPFERLKM
SADDGIRNLYLDFGGPEGELTMDLHSCPPIVFLHTFLSAKVTRMGLLV

TRTRPLEQKLISEEDLAANDILDYKDDDDKV

Tag:	C-Myc/DDK
Purity:	> 80% as determined by SDS-PAGE and Coomassie blue staining
Concentration:	>0.05 µg/µL as determined by microplate BCA method
Labeling Method:	Labeled with [U- ¹³ C ₆ , ¹⁵ N ₄]-L-Arginine and [U- ¹³ C ₆ , ¹⁵ N ₂]-L-Lysine
Buffer:	25 mM Tris-HCl, 100 mM glycine, pH 7.3
Storage:	Store at -80°C. Avoid repeated freeze-thaw cycles.
Stability:	Stable for 3 months from receipt of products under proper storage and handling conditions.
RefSeq:	NP_006741
RefSeq Size:	9771
RefSeq ORF:	1620



[View online »](#)

Synonyms: D16S2531E; EST25263; SNT2B2; SNT3; SNTL

Locus ID: 6645

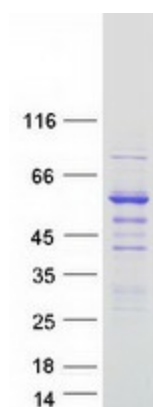
UniProt ID: [Q13425](#), [A0A024R732](#)

Cytogenetics: 16q22.1

Summary: Dystrophin is a large, rod-like cytoskeletal protein found at the inner surface of muscle fibers. Dystrophin is missing in Duchenne Muscular Dystrophy patients and is present in reduced amounts in Becker Muscular Dystrophy patients. The protein encoded by this gene is a peripheral membrane protein found associated with dystrophin and dystrophin-related proteins. This gene is a member of the syntrophin gene family, which contains at least two other structurally-related genes. [provided by RefSeq, Jul 2008]

Protein Families: Secreted Protein

Product images:



Coomassie blue staining of purified SNTB2 protein (Cat# [TP308309]). The protein was produced from HEK293T cells transfected with SNTB2 cDNA clone (Cat# [RC208309]) using MegaTran 2.0 (Cat# [TT210002]).