

## Product datasheet for PH308295

### STIMATE (NM\_198563) Human Mass Spec Standard

#### Product data:

Product Type:	Mass Spec Standards
Description:	TMEM110 MS Standard C13 and N15-labeled recombinant protein (NP_940965)
Species:	Human
Expression Host:	HEK293
Expression cDNA Clone or AA Sequence:	RC208295
Predicted MW:	33.2 kDa
Protein Sequence:	>RC208295 protein sequence Red=Cloning site Green=Tags(s)  MQGPAGNASRGLPGPPPSTVASGAGRCESGALMHSFGIFLQGLLGVVAFSTLMLKRFREPKHERRPWRIW FLDTSKQAI GMLFIHFANVYLADLTEEDPCSLYLINFLLDATVGMLLIYVGVRVAVSVLVEWQQWESLRFG EYGDPLQCGAWVGQCALYIVIMIFEKSVFIVLLILQWKVALLNPIENPDLKLAIVMLIVPFFVNALMF WVVDNFLMRKGKTKAKLEERGANQDSRNGSKVRYRRAASHEESESEILISADDEMEESDVEEDLRRLTPL KPVKKKKHRFGLPV  TRTRPLEQKLI SEEDLAANDILDYKDDDDKV
Tag:	C-Myc/DDK
Purity:	> 80% as determined by SDS-PAGE and Coomassie blue staining
Concentration:	>0.05 µg/µL as determined by microplate BCA method
Labeling Method:	Labeled with [U- 13C6, 15N4]-L-Arginine and [U- 13C6, 15N2]-L-Lysine
Buffer:	25 mM Tris-HCl, 100 mM glycine, pH 7.3
Storage:	Store at -80°C. Avoid repeated freeze-thaw cycles.
Stability:	Stable for 3 months from receipt of products under proper storage and handling conditions.
RefSeq:	<u><a href="#">NP_940965</a></u>
RefSeq Size:	4746
RefSeq ORF:	882
Synonyms:	TMEM110
Locus ID:	375346



[View online »](#)

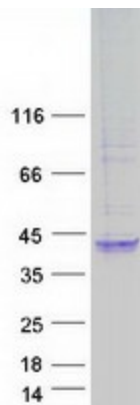
UniProt ID: [Q86TL2](#)

Cytogenetics: 3p21.1

**Summary:** Acts as a regulator of store-operated  $\text{Ca}^{2+}$  entry (SOCE) at junctional sites that connect the endoplasmic reticulum (ER) and plasma membrane (PM), called ER-plasma membrane (ER-PM) junction or cortical ER (PubMed:26322679, PubMed:26644574). SOCE is a  $\text{Ca}^{2+}$  influx following depletion of intracellular  $\text{Ca}^{2+}$  stores (PubMed:26322679). Acts by interacting with STIM1, promoting STIM1 conformational switch (PubMed:26322679). Involved in STIM1 relocalization to ER-PM junctions (PubMed:26644574). Contributes to the maintenance and reorganization of store-dependent ER-PM junctions (PubMed:26644574).[UniProtKB/Swiss-Prot Function]

Protein Families: Transmembrane

### Product images:



Coomassie blue staining of purified STIMATE protein (Cat# [TP308295]). The protein was produced from HEK293T cells transfected with STIMATE cDNA clone (Cat# [RC208295]) using MegaTran 2.0 (Cat# [TT210002]).