

Product datasheet for PH308279

SYS1 (NM_033542) Human Mass Spec Standard

Product data:

| | |
|---------------------------------------|---|
| Product Type: | Mass Spec Standards |
| Description: | SYS1 MS Standard C13 and N15-labeled recombinant protein (NP_291020) |
| Species: | Human |
| Expression Host: | HEK293 |
| Expression cDNA Clone or AA Sequence: | RC208279 |
| Predicted MW: | 17.6 kDa |
| Protein Sequence: | >RC208279 protein sequence Red =Cloning site Green =Tags(s) MAGQFRSYVWDPILLISQIVLMQTVYYGSLGLWLALVDGLVRSSPSLDQMFDAEILGFSTPPGRLSMMSF ILNALTALGLLYFIRRQKQCLDFTVTYVHFFHLLGCWFYSSRFPSALTWVLVQAVCIALMAVIGEYLCMR TELKEIPLNSAPKSNV TRTRPLEQKLI SEEDLAANDILDYKDDDDKV |
| Tag: | C-Myc/DDK |
| Purity: | > 80% as determined by SDS-PAGE and Coomassie blue staining |
| Concentration: | >0.05 µg/µL as determined by microplate BCA method |
| Labeling Method: | Labeled with [U- ¹³ C ₆ , ¹⁵ N ₄]-L-Arginine and [U- ¹³ C ₆ , ¹⁵ N ₂]-L-Lysine |
| Buffer: | 25 mM Tris-HCl, 100 mM glycine, pH 7.3 |
| Storage: | Store at -80°C. Avoid repeated freeze-thaw cycles. |
| Stability: | Stable for 3 months from receipt of products under proper storage and handling conditions. |
| RefSeq: | <u>NP_291020</u> |
| RefSeq Size: | 2802 |
| RefSeq ORF: | 468 |
| Synonyms: | C20orf169; dj453C12.4; dj453C12.4.1 |
| Locus ID: | 90196 |
| UniProt ID: | <u>Q8N2H4</u> |



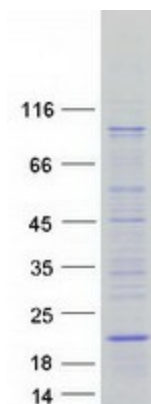
[View online »](#)

Cytogenetics: 20q13.12

Summary: SYS1 forms a complex with ADP-ribosylation factor-related protein ARFRP1 (MIM 604699) and targets ARFRP1 to the Golgi apparatus (Behnia et al., 2004 [PubMed 15077113]).[supplied by OMIM, Aug 2009]

Protein Families: Transmembrane

Product images:



Coomassie blue staining of purified SYS1 protein (Cat# [TP308279]). The protein was produced from HEK293T cells transfected with SYS1 cDNA clone (Cat# [RC208279]) using MegaTran 2.0 (Cat# [TT210002]).