

## Product datasheet for PH308276

### CD3E (NM\_000733) Human Mass Spec Standard

#### Product data:

Product Type:	Mass Spec Standards
Description:	CD3E MS Standard C13 and N15-labeled recombinant protein (NP_000724)
Species:	Human
Expression Host:	HEK293
Expression cDNA Clone or AA Sequence:	RC208276
Predicted MW:	23.1 kDa
Protein Sequence:	>RC208276 protein sequence <b>Red</b> =Cloning site <b>Green</b> =Tags(s)  MQSGTHWRVLGLCLLSVGVWQDGNEMGGITQTPYKVSISGTTVILTCPQYPGSEILWQHNDKNIGGDE DDKNIGSDEDHLSLKEFSELEQSGYYVCYPRGSKPEDANFYLYLRARVCENCMEMDVMSVATIVIVDICI TGGLLLLVYYWSKNRKAKAKPVTRGAGAGGRQRGQNKERPPVPNPDPYEP <del>IRK</del> Q <del>RD</del> LYSGLNQRRI  <b>TR</b> TRPLEQKLISEEDLAANDILDYKDDDDKV
Tag:	C-Myc/DDK
Purity:	> 80% as determined by SDS-PAGE and Coomassie blue staining
Concentration:	>0.05 µg/µL as determined by microplate BCA method
Labeling Method:	Labeled with [U- <sup>13</sup> C <sub>6</sub> , <sup>15</sup> N <sub>4</sub> ]-L-Arginine and [U- <sup>13</sup> C <sub>6</sub> , <sup>15</sup> N <sub>2</sub> ]-L-Lysine
Buffer:	25 mM Tris-HCl, 100 mM glycine, pH 7.3
Storage:	Store at -80°C. Avoid repeated freeze-thaw cycles.
Stability:	Stable for 3 months from receipt of products under proper storage and handling conditions.
RefSeq:	<a href="#">NP_000724</a>
RefSeq Size:	1534
RefSeq ORF:	621
Synonyms:	IMD18; T3E; TCRE
Locus ID:	916
UniProt ID:	<a href="#">P07766</a>



[View online »](#)

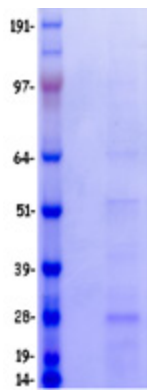
**Cytogenetics:** 11q23.3

**Summary:** The protein encoded by this gene is the CD3-epsilon polypeptide, which together with CD3-gamma, -delta and -zeta, and the T-cell receptor alpha/beta and gamma/delta heterodimers, forms the T-cell receptor-CD3 complex. This complex plays an important role in coupling antigen recognition to several intracellular signal-transduction pathways. The genes encoding the epsilon, gamma and delta polypeptides are located in the same cluster on chromosome 11. The epsilon polypeptide plays an essential role in T-cell development. Defects in this gene cause immunodeficiency. This gene has also been linked to a susceptibility to type I diabetes in women. [provided by RefSeq, Jul 2008]

**Protein Families:** Druggable Genome, Transmembrane

**Protein Pathways:** Hematopoietic cell lineage, Primary immunodeficiency, T cell receptor signaling pathway

**Product images:**



Coomassie blue staining of purified CD3E protein (Cat# [TP308276]). The protein was produced from HEK293T cells transfected with CD3E cDNA clone (Cat# [RC208276]) using MegaTran 2.0 (Cat# [TT210002]).