

Product datasheet for PH308270

SGSH (NM_000199) Human Mass Spec Standard

Product data:

Product Type:	Mass Spec Standards
Description:	SGSH MS Standard C13 and N15-labeled recombinant protein (NP_000190)
Species:	Human
Expression Host:	HEK293
Expression cDNA Clone or AA Sequence:	RC208270
Predicted MW:	56.7 kDa
Protein Sequence:	>RC208270 protein sequence Red=Cloning site Green=Tags(s)

MSCPVPACCALLLVLGLCRARPRNALLLLADDGGFESGAYNNSAIATPHLDALARSLFRNAFTSVSSC
SPSRASLLTGLPQHONGMYGLHQDVHFNFSFDKVRSLPLLLSQAGVRTGIIGKKHVGPEVYYPDFAYTE
ENGSVLQVGRNITRIKLLVRKFLQTQDDRPFFLYAFHDPHRCGHSQPQYGTFCCKFGNGESGMGRIPDW
TPQAYDPLDVLVPYFVPNTPAARADLAAQYTTVGRMDQGVGLVLQELRDAGVLDLTLVIFTSDNGIPFPS
GRTNLYWPGTAEPLLVSSEHPKRWQVSEAYVSLDLTPTILDWFSIPYPSYAFSGSKTIHLTGRSLLP
ALEAEPLWATVFGSQSHHEVTMSYPMRSVQHRHFRLVHNLNFKMPFPIDQDFYVSPTFQDLLNRTTAGQP
TGWYKDLRHYYYRARWELYDRSRPHETQNLATDPRFAQLLEMLRDQLAKWQWETHDPWVCAPDGVLEEK
LSPQCQPLHNEL

TRTRPLEQKLI SEEDLAANDILDYKDDDDKV

Tag:	C-Myc/DDK
Purity:	> 80% as determined by SDS-PAGE and Coomassie blue staining
Concentration:	>0.05 µg/µL as determined by microplate BCA method
Labeling Method:	Labeled with [U- 13C6, 15N4]-L-Arginine and [U- 13C6, 15N2]-L-Lysine
Buffer:	25 mM Tris-HCl, 100 mM glycine, pH 7.3
Storage:	Store at -80°C. Avoid repeated freeze-thaw cycles.
Stability:	Stable for 3 months from receipt of products under proper storage and handling conditions.
RefSeq:	<u>NP_000190</u>
RefSeq Size:	2770
RefSeq ORF:	1506



[View online »](#)

Synonyms: HSS; MPS3A; SFMD

Locus ID: 6448

UniProt ID: [P51688](#)

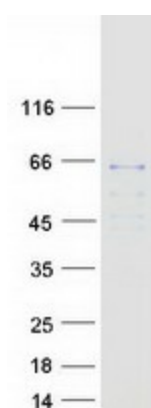
Cytogenetics: 17q25.3

Summary: This gene encodes the enzyme sulfamidase; one of several enzymes involved in the lysosomal degradation of heparan sulfate. Mutations in this gene are associated with the lysosomal storage disease mucopolysaccharidosis IIIA, also known as Sanfilippo syndrome A, which results from impaired degradation of heparan sulfate. Transcripts of varying sizes have been reported but their biological validity has not been determined. [provided by RefSeq, Jun 2017]

Protein Families: Druggable Genome

Protein Pathways: Glycosaminoglycan degradation, Lysosome, Metabolic pathways

Product images:



Coomassie blue staining of purified SGSH protein (Cat# [TP308270]). The protein was produced from HEK293T cells transfected with SGSH cDNA clone (Cat# [RC208270]) using MegaTran 2.0 (Cat# [TT210002]).