

## Product datasheet for PH308256

### DNAAF11 (NM\_012472) Human Mass Spec Standard

#### Product data:

Product Type:	Mass Spec Standards
Description:	LRR6 MS Standard C13 and N15-labeled recombinant protein (NP_036604)
Species:	Human
Expression Host:	HEK293
Expression cDNA Clone or AA Sequence:	RC208256
Predicted MW:	54.3 kDa
Protein Sequence:	>RC208256 protein sequence Red=Cloning site Green=Tags(s)

MGWITEDLIRRNAEHNDCVIFSLEELSLHQEIERLEHIDKWCARDLKILYLQNNLIGKIENVSKLKKLEY  
LNLALNNIEKIENLEGCEELAKLDLTVNFIGELSSIKNLQHNHILKELFLMGNPCASFDHYREFVATLP  
QLKWLGDGKEIEPSERIKALQDYSVIEPQIREQEKDHLKRAKLKEEAQRKHQEEEDKNEDKRSNAGFDGRW  
YTDINATLSSLESKDHLQAPDTEEHNTKKLDNSEDDLEFWNKPCLFPTESRLETLRHMEKQRKKQEKLSE  
KKKKVVPRTLTITEDGKALNVNEPKIDFSLKDNEKQIILDVAVRYMDTSLIDVDVQPTYVYRVMIKGKPF  
QLVLP AEVKPDSSAKRSQTTGHLVICMPKVGVEITGGQRAFMSMKTSDRSREQTNTRSKHMEKLEVDP  
SKHSFPDVTNIVQEKKHTPRRRPEPKIIPSEEDPTFEDNPEVPLI

TRTRPLEQKLISEEDLAANDILDYKDDDDKV

Tag:	C-Myc/DDK
Purity:	> 80% as determined by SDS-PAGE and Coomassie blue staining
Concentration:	>0.05 µg/µL as determined by microplate BCA method
Labeling Method:	Labeled with [U- <sup>13</sup> C <sub>6</sub> , <sup>15</sup> N <sub>4</sub> ]-L-Arginine and [U- <sup>13</sup> C <sub>6</sub> , <sup>15</sup> N <sub>2</sub> ]-L-Lysine
Buffer:	25 mM Tris-HCl, 100 mM glycine, pH 7.3
Storage:	Store at -80°C. Avoid repeated freeze-thaw cycles.
Stability:	Stable for 3 months from receipt of products under proper storage and handling conditions.
RefSeq:	<u><a href="#">NP_036604</a></u>
RefSeq Size:	1888
RefSeq ORF:	1398
Synonyms:	CILD19; LRR6; LRTP; tilB; TSLRP



[View online »](#)

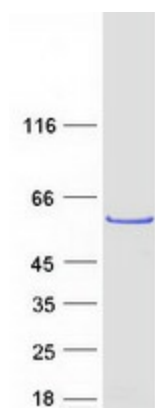
Locus ID: 23639

UniProt ID: [Q86X45](#)

Cytogenetics: 8q24.22

**Summary:** The protein encoded by this gene contains several leucine-rich repeat domains and appears to be involved in the motility of cilia. Defects in this gene are a cause of primary ciliary dyskinesia-19 (CILD19). Alternative splicing of this gene results in multiple transcript variants. Related pseudogenes have been identified on chromosomes 4, 11 and 22. [provided by RefSeq, Apr 2016]

### Product images:



Coomassie blue staining of purified LRRC6 protein (Cat# [TP308256]). The protein was produced from HEK293T cells transfected with LRRC6 cDNA clone (Cat# [RC208256]) using MegaTran 2.0 (Cat# [TT210002]).