

Product datasheet for PH308245

MMP19 (NM_002429) Human Mass Spec Standard

Product data:

Product Type:	Mass Spec Standards
Description:	MMP19 MS Standard C13 and N15-labeled recombinant protein (NP_002420)
Species:	Human
Expression Host:	HEK293
Expression cDNA Clone or AA Sequence:	RC208245
Predicted MW:	57.4 kDa
Protein Sequence:	>RC208245 protein sequence Red=Cloning site Green=Tags(s)

MNCQQLWLGFLLPMTVSGRVLGLAEVAPVDYLSQYGYLQKPLEGSNNFKPEDITEALRAFQEASELPVSG
QLDDATRARMRQPRCGLDPFNQKTLKYLLLGRWRKKHLTFRILNLPSTLPPHTARAALRQAFQDWSNVA
PLTFQEVQAGAADIRLSFHGRQSSYCSNTFDGPGRVLAHADIPELGSVHFDEDEFWTEGYRGNLRIIA
AHEVGHALGLGHSRYSQALMAPVYEGYRPHFKLHPDDVAGIQALYGKKSPIRDEEEEEETELPTVPPVPT
EPSMPDPCCSELAMMLGPRGKTYAFKGDYVWTVSDSGPGLFRVSALWEGLPGNLDAAYVSPRTQWIH
FFKGDVWRYINFKMSPGFPPKLNRVENLDAALYWPLNQKVFLFKGSGYWQWDELARTDFSSYPKPIKG
LFTGVPNQPSAAMSWQDGRVYFFKGVYWRNLNQLRVEKGYPRNISHNWMHCRPRTIDTTPSGGNTTPSG
TGITLDTTLSATETTFEY

TRTRPLEQKLISEEDLAANDILDYKDDDDKV

Tag:	C-Myc/DDK
Purity:	> 80% as determined by SDS-PAGE and Coomassie blue staining
Concentration:	>0.05 µg/µL as determined by microplate BCA method
Labeling Method:	Labeled with [U- 13C6, 15N4]-L-Arginine and [U- 13C6, 15N2]-L-Lysine
Buffer:	25 mM Tris-HCl, 100 mM glycine, pH 7.3
Storage:	Store at -80°C. Avoid repeated freeze-thaw cycles.
Stability:	Stable for 3 months from receipt of products under proper storage and handling conditions.
RefSeq:	<u>NP_002420</u>
RefSeq Size:	3294
RefSeq ORF:	1524



[View online »](#)

Synonyms: CODA; MMP18; RASI-1

Locus ID: 4327

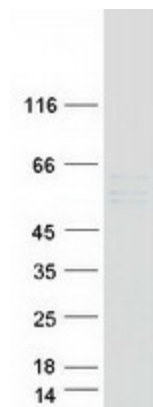
UniProt ID: [Q99542](#)

Cytogenetics: 12q13.2

Summary: This gene encodes a member of a family of proteins that are involved in the breakdown of extracellular matrix in normal physiological processes, such as embryonic development, reproduction, and tissue remodeling, as well as in disease processes, such as arthritis and metastasis. The encoded protein is secreted as an inactive proprotein, which is activated upon cleavage by extracellular proteases. Alternative splicing results in multiple transcript variants for this gene. [provided by RefSeq, Jan 2013]

Protein Families: Protease, Secreted Protein

Product images:



Coomassie blue staining of purified MMP19 protein (Cat# [TP308245]). The protein was produced from HEK293T cells transfected with MMP19 cDNA clone (Cat# [RC208245]) using MegaTran 2.0 (Cat# [TT210002]).