

Product datasheet for PH308205

GUCY1B1 (NM_000857) Human Mass Spec Standard

Product data:

Product Type:	Mass Spec Standards
Description:	GUCY1B3 MS Standard C13 and N15-labeled recombinant protein (NP_000848)
Species:	Human
Expression Host:	HEK293
Expression cDNA Clone or AA Sequence:	RC208205
Predicted MW:	70.5 kDa
Protein Sequence:	>RC208205 protein sequence Red=Cloning site Green=Tags(s)

MYGFVNHALELLVIRNYGPEVWEDIKKEAQLDEEGQFLVRIIYDDSKTYDLVAAASKVLNLNAGEILQMF
GKMFFVFCQESGYDTILRVLGSNVREFLQNLDALHDHLATIYPGMRAPSFRCCTDAEKKGKGLILHYYSERE
GLQDIVIGIIKTVAQQIHGTEIDMKVIQQRNEECDHTQFLIEEKESKEEDFYEDLDRFEENGTQESRISP
YTFCKAFPFIIFDRDLVVTQCNAIYRVLPLQPGNCSLLSVFSLVRPHIDISFHGILSHINTVFVLR
KEGLLDVEKLECEDELGTETISCLRLKGMIIYLPEADSIILFLCSPSVMNLDDLTRRGLYLSDIPLHDATR
DLVLLGEQFREEYKLTQELEILTDRQLTLRALEDEKKTDTLLYSVLPSPVANELRHKRPVPAKRYDNV
TILFSGIVGFNAFCSKHASGEGAMKIVNLLNDLYTRFDLTDLSRKNPFVYKVVETVGDYKMTVSGLPEPCI
HHARSICHLALDMMIEIAGQVQVDGESVQITIGIHTGEVVTGVIGQRMPCYCLFGNTVNLTSRTETTGEKG
KINVSEYTYRCLMSPENSDPQFHLEHRGPVSMKGKKEPMQWFLSRKNTGTEETKQDDD

TRTRPLEQKLISEEDLAANDILDYKDDDDKV

Tag:	C-Myc/DDK
Purity:	> 80% as determined by SDS-PAGE and Coomassie blue staining
Concentration:	>0.05 µg/µL as determined by microplate BCA method
Labeling Method:	Labeled with [U- ¹³ C ₆ , ¹⁵ N ₄]-L-Arginine and [U- ¹³ C ₆ , ¹⁵ N ₂]-L-Lysine
Buffer:	25 mM Tris-HCl, 100 mM glycine, pH 7.3
Storage:	Store at -80°C. Avoid repeated freeze-thaw cycles.
Stability:	Stable for 3 months from receipt of products under proper storage and handling conditions.
RefSeq:	NP_000848
RefSeq Size:	3261
RefSeq ORF:	1857



[View online »](#)

Synonyms: GC-S-beta-1; GC-SB3; GUC1B3; GUCB3; GUCSB3; GUCY1B3

Locus ID: 2983

UniProt ID: [Q02153](#)

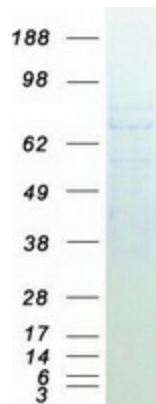
Cytogenetics: 4q32.1

Summary: This gene encodes the beta subunit of the soluble guanylate cyclase (sGC), which catalyzes the conversion of GTP (guanosine triphosphate) to cGMP (cyclic guanosine monophosphate). The encoded protein contains an HNOX domain, which serves as a receptor for ligands such as nitric oxide, oxygen and nitrovasodilator drugs. Alternative splicing results in multiple transcript variants. [provided by RefSeq, May 2014]

Protein Families: Druggable Genome

Protein Pathways: Gap junction, Long-term depression, Purine metabolism, Vascular smooth muscle contraction

Product images:



Coomassie blue staining of purified GUCY1B1 protein (Cat# [TP308205]). The protein was produced from HEK293T cells transfected with GUCY1B1 cDNA clone (Cat# [RC208205]) using MegaTran 2.0 (Cat# [TT210002]).