

Product datasheet for PH308200

Calpain 7 (CAPN7) (NM_014296) Human Mass Spec Standard

Product data:

Product Type:	Mass Spec Standards
Description:	CAPN7 MS Standard C13 and N15-labeled recombinant protein (NP_055111)
Species:	Human
Expression Host:	HEK293
Expression cDNA Clone or AA Sequence:	RC208200
Predicted MW:	92.7 kDa
Protein Sequence:	>RC208200 protein sequence Red=Cloning site Green=Tags(s)

MDATALERDAVQFARLAVQRDHEGRYSEAVFYKAAQALIIYAEMAGSSLENIQEKITEYLERVQALHSA
VQSKSADPLKSKHQLDLERAHFLVTQAFDEDEKENVEDAIELYTEAVDLCLKTSYETADKVLQNKLKQLA
RQALDRAEALGEPLTKPVGKISSTSVKPKPPERAHFPLGANPFLERPQSFISPDSCDAQGQRYTAEIE
VLRTTSKINGIEYVPMNVDLRERFAYPMPCDRWGKLPSPKQKTTFSKWVRPEDLTNNPTMIYTVSSF
SIKQTIIVSDCSFVSLAISAAAYERRFNKLLITGIIYPQNKDGEPEYNPCGKYMVKLHLNGVPRKVIIDDQ
LPVDHKGELLCSYSNNKSELWVSLIEKAYMKVMGGYDFPGSNSNIDLHALTGWIPERIAMHSDSQTF
NSFRMLYQRFHKGDVLTITASTGMMTEAEGEKWGLVPTHAYAVLDIREFKGLRFIQLKNPWSHLRWKGRYS
ENDVENWTPPELQKYLNFDPRTAQKIDNGIFWISWDDLCQYYDVIYLSWNPGLFKESTCIHSTWDAKQGPV
KDAYSLANNPQYKLEVQCPQGGAAVWVLLSRHITDKDDFANNREFITMVVYKTDGKVVYYPADPPPYIDG
IRINSPHYLTKIKLTTPTGHTFTLVVSQYEQNTIHYTVRVYSACSFTEKIPSPYTLKSRINGKWSGQS
AGGCGNFQETHKNPIYQFHIEKTGPLLIELRGRQYVGFVTVSTLGDGPHGFLRKSSGDYRCGFC
YLELENIPSGIFNIIPSTFLPKQEGPFFLDFNSIIPKIKITQLQ

TRTRPLEQKLISEEDLAANDILDYKDDDDKV

Tag:	C-Myc/DDK
Purity:	> 80% as determined by SDS-PAGE and Coomassie blue staining
Concentration:	>0.05 µg/µL as determined by microplate BCA method
Labeling Method:	Labeled with [U- ¹³ C ₆ , ¹⁵ N ₄]-L-Arginine and [U- ¹³ C ₆ , ¹⁵ N ₂]-L-Lysine
Buffer:	25 mM Tris-HCl, 100 mM glycine, pH 7.3
Storage:	Store at -80°C. Avoid repeated freeze-thaw cycles.
Stability:	Stable for 3 months from receipt of products under proper storage and handling conditions.
RefSeq:	<u>NP_055111</u>



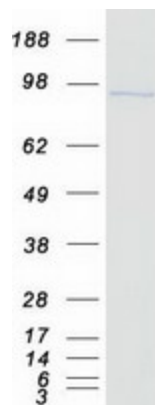
[View online »](#)

RefSeq Size:	4385
RefSeq ORF:	2439
Synonyms:	CALPAIN7; PALBH
Locus ID:	23473
UniProt ID:	Q9Y6W3 , Q7Z479
Cytogenetics:	3p25.1

Summary: Calpains are ubiquitous, well-conserved family of calcium-dependent, cysteine proteases. The calpain proteins are heterodimers consisting of an invariant small subunit and variable large subunits. The large subunit possesses a cysteine protease domain, and both subunits possess calcium-binding domains. Calpains have been implicated in neurodegenerative processes, as their activation can be triggered by calcium influx and oxidative stress. The function of the protein encoded by this gene is not known. An orthologue has been found in mouse but it seems to diverge from other family members. The mouse orthologue is thought to be calcium independent with protease activity. [provided by RefSeq, Jul 2008]

Protein Families: Druggable Genome, Protease

Product images:



Coomassie blue staining of purified CAPN7 protein (Cat# [TP308200]). The protein was produced from HEK293T cells transfected with CAPN7 cDNA clone (Cat# [RC208200]) using MegaTran 2.0 (Cat# [TT210002]).