

Product datasheet for PH308167

GIMAP1 (NM_130759) Human Mass Spec Standard

Product data:

Product Type:	Mass Spec Standards
Description:	GIMAP1 MS Standard C13 and N15-labeled recombinant protein (NP_570115)
Species:	Human
Expression Host:	HEK293
Expression cDNA Clone or AA Sequence:	RC208167
Predicted MW:	34.4 kDa
Protein Sequence:	>RC208167 protein sequence Red=Cloning site Green=Tags(s)

MGGRKMATDEENVYGLEENAQSRQESTRRLILVGRTGAGKSATGNSILGQRRFFSRLGATSVTRACTTGS
RRWDKCHVEVVDTPDIFSSQVSKTDPGCEERGHCYLLSAPGPHALLLVTLGRFTAQDQQAVRQVRDMFG
EDVLKWMVIVFTRKEDLAGGSLHDYVSNTENRALRELVAECGGRVCAFDNRATGREQEAQVEQLLGMVEG
LVLEHKGAHYSNEVYELAQVLRWAGPEERLRRVAERVAARVQRRPWGAWLSARLWKWLKSPRSWRLGLAL
LLGGALLFWLLHRRWSEAVAEPD

TRTRPLEQKLISEEDLAANDILDYKDDDDKV

Tag:	C-Myc/DDK
Purity:	> 80% as determined by SDS-PAGE and Coomassie blue staining
Concentration:	>0.05 µg/µL as determined by microplate BCA method
Labeling Method:	Labeled with [U- 13C6, 15N4]-L-Arginine and [U- 13C6, 15N2]-L-Lysine
Buffer:	25 mM Tris-HCl, 100 mM glycine, pH 7.3
Storage:	Store at -80°C. Avoid repeated freeze-thaw cycles.
Stability:	Stable for 3 months from receipt of products under proper storage and handling conditions.
RefSeq:	NP_570115
RefSeq Size:	4430
RefSeq ORF:	918
Synonyms:	HIMAP1; IAN2; IMAP1; IMAP38
Locus ID:	170575



[View online »](#)

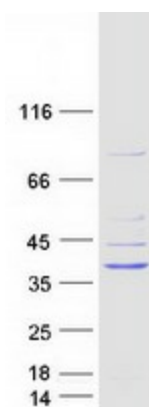
UniProt ID: [Q8WWP7](#), [A0A090N8Z4](#)

Cytogenetics: 7q36.1

Summary: This gene encodes a protein belonging to the GTP-binding superfamily and to the immun-associated nucleotide (IAN) subfamily of nucleotide-binding proteins. In humans, the IAN subfamily genes are located in a cluster at 7q36.1. This gene is thought to be involved in the differentiation of T helper (Th) cells of the Th1 lineage, and the related mouse gene has been shown to be critical for the development of mature B and T lymphocytes. Read-through transcription exists between this gene and the downstream GIMAP5 (GTPase, IMAP family member 5) gene. [provided by RefSeq, Dec 2010]

Protein Families: Transmembrane

Product images:



Coomassie blue staining of purified GIMAP1 protein (Cat# [TP308167]). The protein was produced from HEK293T cells transfected with GIMAP1 cDNA clone (Cat# [RC208167]) using MegaTran 2.0 (Cat# [TT210002]).