

## Product datasheet for PH308152

### Kallikrein 8 (KLK8) (NM\_007196) Human Mass Spec Standard

#### Product data:

|                                       |   |
|---------------------------------------|---|
| Product Type:                         | Mass Spec Standards   |
| Description:                          | KLK8 MS Standard C13 and N15-labeled recombinant protein (NP_009127)  |
| Species:                              | Human   |
| Expression Host:                      | HEK293  |
| Expression cDNA Clone or AA Sequence: | RC208152  |
| Predicted MW:                         | 28.1 kDa  |
| Protein Sequence:                     | >RC208152 protein sequence<br>Red=Cloning site Green=Tags(s)<br><br>MGRPRPRAAKTWMFLLLLGGAWAGHSRAQEDKVLGGHECQPHSQPWQAALFQGQQLLCGGVLVGGNWVLT<br>AAHCKKPKYTVRLGDHSLQNKDGPQEIPVVQSIHPHCYNSSDVEDHNHDLMLLQLRDQASLGSKVKPIS<br>LADHCTQPGQKCTVSGWGTVTSPRENFDTLNCAEVKIFPQKKCEDAYPGQITDVMVCAGSSKGADTCQG<br>DSGGPLVCDGALQGITSWGSDPGRSDKPGVYTNICRYLDWIKKIIGSKG<br><br>TRTRPLEQKLI SEEDLAANDILDYKDDDDKV |
| Tag:                                  | C-Myc/DDK   |
| Purity:                               | > 80% as determined by SDS-PAGE and Coomassie blue staining   |
| Concentration:                        | >0.05 µg/µL as determined by microplate BCA method  |
| Labeling Method:                      | Labeled with [U- <sup>13</sup> C <sub>6</sub> , <sup>15</sup> N <sub>4</sub> ]-L-Arginine and [U- <sup>13</sup> C <sub>6</sub> , <sup>15</sup> N <sub>2</sub> ]-L-Lysine  |
| Buffer:                               | 25 mM Tris-HCl, 100 mM glycine, pH 7.3  |
| Storage:                              | Store at -80°C. Avoid repeated freeze-thaw cycles.  |
| Stability:                            | Stable for 3 months from receipt of products under proper storage and handling conditions.  |
| RefSeq:                               | <a href="#">NP_009127</a>   |
| RefSeq Size:                          | 1023  |
| RefSeq ORF:                           | 780   |
| Synonyms:                             | HNP; NP; NRPN; PRSS19; TADG14   |
| Locus ID:                             | 11202   |
| UniProt ID:                           | <a href="#">O60259</a>  |



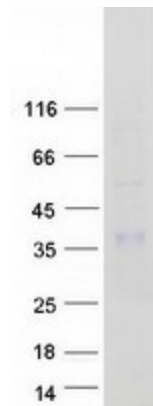
[View online »](#)

**Cytogenetics:** 19q13.41

**Summary:** Kallikreins are a subgroup of serine proteases having diverse physiological functions. Growing evidence suggests that many kallikreins are implicated in carcinogenesis and some have potential as novel cancer and other disease biomarkers. This gene is one of the fifteen kallikrein subfamily members located in tandem in a gene cluster on chromosome 19. The encoded protein may be involved in proteolytic cascade in the skin and may serve as a biomarker for ovarian cancer. Alternate splicing of this gene results in multiple transcript variants encoding different isoforms. [provided by RefSeq, Jul 2013]

**Protein Families:** Druggable Genome, Secreted Protein, Transmembrane

### Product images:



Coomassie blue staining of purified KLK8 protein (Cat# [TP308152]). The protein was produced from HEK293T cells transfected with KLK8 cDNA clone (Cat# [RC208152]) using MegaTran 2.0 (Cat# [TT210002]).