

Product datasheet for PH308146

Synaptotagmin VI (SYT6) (NM_205848) Human Mass Spec Standard

Product data:

Product Type:	Mass Spec Standards
Description:	SYT6 MS Standard C13 and N15-labeled recombinant protein (NP_995320)
Species:	Human
Expression Host:	HEK293
Expression cDNA Clone or AA Sequence:	RC208146
Predicted MW:	48.4 kDa
Protein Sequence:	>RC208146 protein sequence Red=Cloning site Green=Tags(s)

MPWRNKEASSPSSANPPLEALQSPSFRGNMADKLDKDPSTLGFLEAAVKISHTSPDIPAEVQMSVKEHIMR
HTRLQRQTTEPASSTRHTSFKRHLPRQMHVSSVDYGNELPPAAEQPTSIGRIKPELYKQKSVGDGAKSE
ATKSCGKINFLRYDYETETLIVRILKAFDLPAKDFCGSSDPYVKIYLLPDRKCKLQTRVHRKTLNPTFD
ENFHFPVPEELADRKLHLVDFDFRFSRHMIGEVIIDNLFEASDLRETSIWKDIQYATSEVDLGEI
MFSLCYLPAGRLTLTVIKCRNLKAMDITGSDPYVKVSLLCDGRRLKKKKTIIKNTLNPVYNEAIFD
IPPENMDQVSLLSVMDYDRVGHNEIIGVCRVGITAEGLGRDHWNEMLAYPRKPIAHWHSLVEVKKSFKE
GNPRL

TRTRPLEQKLISEEDLAANDILDYKDDDDKV

Tag:	C-Myc/DDK
Purity:	> 80% as determined by SDS-PAGE and Coomassie blue staining
Concentration:	>0.05 µg/µL as determined by microplate BCA method
Labeling Method:	Labeled with [U- ¹³ C ₆ , ¹⁵ N ₄]-L-Arginine and [U- ¹³ C ₆ , ¹⁵ N ₂]-L-Lysine
Buffer:	25 mM Tris-HCl, 100 mM glycine, pH 7.3
Storage:	Store at -80°C. Avoid repeated freeze-thaw cycles.
Stability:	Stable for 3 months from receipt of products under proper storage and handling conditions.
RefSeq:	NP_995320
RefSeq Size:	4357
RefSeq ORF:	1275
Synonyms:	sytVI



[View online »](#)

Locus ID: 148281

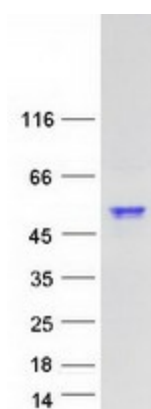
UniProt ID: [Q5T7P8](#), [I6L9C3](#)

Cytogenetics: 1p13.2

Summary: The protein encoded by this gene belongs to the synaptotagmin family. Synaptotagmins share a common domain structure that includes a transmembrane domain and a cytoplasmic region composed of 2 C2 domains, and are involved in calcium-dependent exocytosis of synaptic vesicles. This protein has been shown to be a key component of the secretory machinery involved in acrosomal exocytosis. Alternatively spliced transcript variants have been found for this gene. [provided by RefSeq, Dec 2011]

Protein Families: Secreted Protein, Transmembrane

Product images:



Coomassie blue staining of purified SYT6 protein (Cat# [TP308146]). The protein was produced from HEK293T cells transfected with SYT6 cDNA clone (Cat# [RC208146]) using MegaTran 2.0 (Cat# [TT210002]).