

Product datasheet for PH308127

PKC delta (PRKCD) (NM_212539) Human Mass Spec Standard

Product data:

Product Type:	Mass Spec Standards
Description:	PRKCD MS Standard C13 and N15-labeled recombinant protein (NP_997704)
Species:	Human
Expression Host:	HEK293
Expression cDNA Clone or AA Sequence:	RC208127
Predicted MW:	77.5 kDa
Protein Sequence:	>RC208127 protein sequence Red=Cloning site Green=Tags(s)

MAPFLRIAFNSYELGSLQAEDANQPFCVAKMKEALSTERGKTLVQKKPTMYPEWKSTFDAHIYEGRVIQ
IVLMRAAEEPVSEVTGVSVLAERCKKNNNGKAEFWLDLQPQAKVLMVSVQYFLEDVDCQSMRSEDEAKFP
TMNRRGAIKQAKIHYIKNHEFIATFFGQPTFCVCKDFVWGLNKQGYKCRQCNAAIHKKCIDKIIGRCTG
TAANSRDTIFQKERFNIDMPHRFKVHNYMSPTFCDHCGSLLWGLVKQGLKCEDCGMNVHKKCREKVANLC
GINQKLLAEALNQVTQRASRRSDSASSEPVGIYQGFEEKTGAVGEDMQDMSGTYGKIWEGSSKCNINNFI
FHKVLGKGSFGKVLGELKGRGEYFAIKALKKDVVLIIDDVECTMVEKRVLTAAENPFLTHLICTFQTK
DHLFFVMEFLNGGDLMYHIQDKGRFELYRATFYAAEIMCGLQFLHSKGIYRDLKLDNVLLDRDGHKIA
DFGMCKENIFGESRASTFCGTPDYIAPEILQGLKYTFVSDWWSFGVLLYEMLIQSPFPHGDEDELFESEI
RVDTPHYPRWITKESKDILEKLFEREPTKRLGVTGNIKIHPFFKTINWTLLEKRRLEPPFRPKVKSPRDY
SNFDQEFLENEKARLSYSDKNLIDSMDQSAFAGFSFVNPKEHLLLED

TRTRPLEQKLISEEDLAANDILDYKDDDDKV

Tag:	C-Myc/DDK
Purity:	> 80% as determined by SDS-PAGE and Coomassie blue staining
Concentration:	>0.05 µg/µL as determined by microplate BCA method
Labeling Method:	Labeled with [U- 13C6, 15N4]-L-Arginine and [U- 13C6, 15N2]-L-Lysine
Buffer:	25 mM Tris-HCl, 100 mM glycine, pH 7.3
Storage:	Store at -80°C. Avoid repeated freeze-thaw cycles.
Stability:	Stable for 3 months from receipt of products under proper storage and handling conditions.
RefSeq:	NP_997704
RefSeq Size:	2738



[View online »](#)

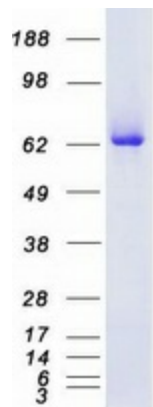
RefSeq ORF:	2028
Synonyms:	ALPS3; CVID9; MAY1; nPKC-delta; PKCD
Locus ID:	5580
UniProt ID:	Q05655 , A0A024R328
Cytogenetics:	3p21.1

Summary: The protein encoded by this gene is a member of the protein kinase C family of serine- and threonine-specific protein kinases. The encoded protein is activated by diacylglycerol and is both a tumor suppressor and a positive regulator of cell cycle progression. Also, this protein can positively or negatively regulate apoptosis. Defects in this gene are a cause of autoimmune lymphoproliferative syndrome. [provided by RefSeq, Aug 2017]

Protein Families: Druggable Genome, Protein Kinase

Protein Pathways: Chemokine signaling pathway, Fc epsilon RI signaling pathway, Fc gamma R-mediated phagocytosis, GnRH signaling pathway, Neurotrophin signaling pathway, Tight junction, Type II diabetes mellitus, Vascular smooth muscle contraction

Product images:



Coomassie blue staining of purified PRKCD protein (Cat# [TP308127]). The protein was produced from HEK293T cells transfected with PRKCD cDNA clone (Cat# [RC208127]) using MegaTran 2.0 (Cat# [TT210002]).