

Product datasheet for PH308124

RP2 (NM_006915) Human Mass Spec Standard

Product data:

Product Type:	Mass Spec Standards
Description:	RP2 MS Standard C13 and N15-labeled recombinant protein (NP_008846)
Species:	Human
Expression Host:	HEK293
Expression cDNA Clone or AA Sequence:	RC208124
Predicted MW:	39.6 kDa
Protein Sequence:	>RC208124 protein sequence Red=Cloning site Green=Tags(s) MGCFFSKRRKADKESRPENEERPKQYSWDQREKVDPKDYMFSGLKDETVGRLPGTVAGQQFLIQDCENC NIYIFDHSATVTIDDCNTNCIIFLGPVKGSVFFRNCRDCKCTLACQQFRVRDCRKLEVFLLCCATQPIIESS SNIKFGCFQWYYPELAFQFKDAGLSIFNNTWSNIHDFTPVSGELNWSLLPEDAVVQDYVPIPTTEELKAV RVSTEANRSIVPISRGRQKSSDESCLVFLFAGDYTIANARKLIDEMVGKGFLLVQTKEVSMKAEDAQRV FREKAPDFLPLLNKGPVIALEFNGDGAVEVCQLIVNEIFNGTKMFVSESKETASGDVDSFYNFADIQMGII TRTRPLEQKLI SEEDLAANDILDYKDDDDKV
Tag:	C-Myc/DDK
Purity:	> 80% as determined by SDS-PAGE and Coomassie blue staining
Concentration:	>0.05 µg/µL as determined by microplate BCA method
Labeling Method:	Labeled with [U- ¹³ C ₆ , ¹⁵ N ₄]-L-Arginine and [U- ¹³ C ₆ , ¹⁵ N ₂]-L-Lysine
Buffer:	25 mM Tris-HCl, 100 mM glycine, pH 7.3
Storage:	Store at -80°C. Avoid repeated freeze-thaw cycles.
Stability:	Stable for 3 months from receipt of products under proper storage and handling conditions.
RefSeq:	<u>NP_008846</u>
RefSeq Size:	3831
RefSeq ORF:	1050
Synonyms:	DELXp11.3; NM23-H10; NME10; TBCCD2; XRP2
Locus ID:	6102



[View online »](#)

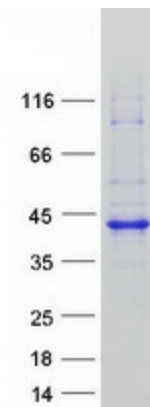
UniProt ID: [O75695](#), [A0A1B2JLU2](#)

Cytogenetics: Xp11.3

Summary: The RP2 locus has been implicated as one cause of X-linked retinitis pigmentosa. The predicted gene product shows homology with human cofactor C, a protein involved in the ultimate step of beta-tubulin folding. Progressive retinal degeneration may therefore be due to the accumulation of incorrectly-folded photoreceptor or neuron-specific tubulin isoforms followed by progressive cell death [provided by RefSeq, Jul 2008]

Protein Families: Druggable Genome

Product images:



Coomassie blue staining of purified RP2 protein (Cat# [TP308124]). The protein was produced from HEK293T cells transfected with RP2 cDNA clone (Cat# [RC208124]) using MegaTran 2.0 (Cat# [TT210002]).