

## Product datasheet for PH308103

### SLAP2 (SLA2) (NM\_032214) Human Mass Spec Standard

#### Product data:

Product Type:	Mass Spec Standards
Description:	SLA2 MS Standard C13 and N15-labeled recombinant protein (NP_115590)
Species:	Human
Expression Host:	HEK293
Expression cDNA Clone or AA Sequence:	RC208103
Predicted MW:	28.6 kDa
Protein Sequence:	>RC208103 protein sequence Red=Cloning site Green=Tags(s)  MGSLSRRLKSLPSPSLSSSVQGGPVTMEAERSKATAVALGSFPAGGPAELSLRLGEPLTIVSEGDWWT VLESEVSGREYNIPSVHVAKVSHGWLYEGLSREKAEELLLPGNPGGAFLIRESQTRRGSYLSVRLSRPA SWDRIRHYRIHCLDNGWLYISPRLTFPSLQALVDHYSELADDICLLKEPCVLQRAGPLPGKDIPLPVTV QRTPLNWKELDSSLLFSEAATGEESLLSEGLRESLSFYISLNDEAVSLDDA  TRTRPLEQKLI SEEDLAANDILDYKDDDDKV
Tag:	C-Myc/DDK
Purity:	> 80% as determined by SDS-PAGE and Coomassie blue staining
Concentration:	>0.05 µg/µL as determined by microplate BCA method
Labeling Method:	Labeled with [U- <sup>13</sup> C <sub>6</sub> , <sup>15</sup> N <sub>4</sub> ]-L-Arginine and [U- <sup>13</sup> C <sub>6</sub> , <sup>15</sup> N <sub>2</sub> ]-L-Lysine
Buffer:	25 mM Tris-HCl, 100 mM glycine, pH 7.3
Storage:	Store at -80°C. Avoid repeated freeze-thaw cycles.
Stability:	Stable for 3 months from receipt of products under proper storage and handling conditions.
RefSeq:	<a href="#">NP_115590</a>
RefSeq Size:	2569
RefSeq ORF:	783
Synonyms:	C20orf156; MARS; SLAP-2; SLAP2
Locus ID:	84174
UniProt ID:	<a href="#">Q9H6Q3</a>



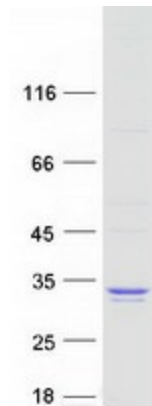
[View online »](#)

Cytogenetics: 20q11.23

**Summary:** This gene encodes a member of the SLAP family of adapter proteins. The encoded protein may play an important receptor-proximal role in downregulating T and B cell-mediated responses and inhibits antigen receptor-induced calcium mobilization. This protein interacts with Cas-Br-M (murine) ecotropic retroviral transforming sequence c. Two transcript variants encoding distinct isoforms have been identified for this gene. [provided by RefSeq, Jul 2008]

**Protein Families:** Druggable Genome, Transcription Factors

### Product images:



Coomassie blue staining of purified SLA2 protein (Cat# [TP308103]). The protein was produced from HEK293T cells transfected with SLA2 cDNA clone (Cat# [RC208103]) using MegaTran 2.0 (Cat# [TT210002]).