

Product datasheet for PH308098

NYREN18 (NUB1) (NM_016118) Human Mass Spec Standard

Product data:

Product Type:	Mass Spec Standards
Description:	NUB1 MS Standard C13 and N15-labeled recombinant protein (NP_057202)
Species:	Human
Expression Host:	HEK293
Expression cDNA Clone or AA Sequence:	RC208098
Predicted MW:	68.9 kDa
Protein Sequence:	>RC208098 representing NM_016118 Red=Cloning site Green=Tags(s)

MAQKKYLQAKLTQFLREDRIQLWKPPYTDENKKVGLALKDLAKQYSDRLECCENEVEKVIEEIRCKAIER
GTGNDNYRTTGIATIEVFLPPRLKKDRKNLLETRLHITGRELRSKIAETFGLQENYIKIVINKKQLQLGK
TLEEQGVAHNVKAMVLELKQSEEDARKNFQLEEEEQNEAKLKEKQIQRTKRGLEILAKRAAETVVDPEMT
PYLDIANQTGRSIRIPPSERKALMLAMGYHEKGRAFLKRKEYGIALPCLLDADKYFCECCRELLDVTVDNY
AVLQLDIVWCYFRLEQLECLDDAEKKNLAQKCFKNCYGENHQRLVHIKNGCGKEKVLFLRLYLLQGIRN
YHSGNDVEAYEYLNKARQLFKELYIDPSKVDNLLQLGFTAQEARLGLRACDGNVDHAATHITNRREELAQ
IRKEEKEKRRRLENIRFLKMGYSTHAAQQILLSNPQMWWLNDSPETDNRQESPSQENIDRLVYMGFD
ALVAEAALRVFRGNVQLAAQTLAHNGGSLPPELPLSPEDSLSPATSPSDSAGTSSASTDEDMETEAVNE
ILEDIPEHEEDYLDSTLEDEEIIIAEYLSYVENRKSATKKN

TRTRPLEQKLISEEDLAANDILDYKDDDDKV

Tag:	C-Myc/DDK
Purity:	> 80% as determined by SDS-PAGE and Coomassie blue staining
Concentration:	>0.05 µg/µL as determined by microplate BCA method
Labeling Method:	Labeled with [U- 13C6, 15N4]-L-Arginine and [U- 13C6, 15N2]-L-Lysine
Buffer:	25 mM Tris-HCl, 100 mM glycine, pH 7.3
Storage:	Store at -80°C. Avoid repeated freeze-thaw cycles.
Stability:	Stable for 3 months from receipt of products under proper storage and handling conditions.
RefSeq:	<u>NP_057202</u>
RefSeq Size:	3112
RefSeq ORF:	1803



[View online »](#)

Synonyms: BS4; NUB1L; NYREN18

Locus ID: 51667

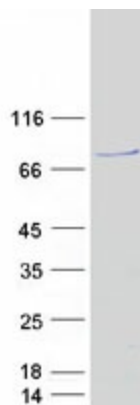
UniProt ID: [Q9Y5A7](#), [H3BM14](#)

Cytogenetics: 7q36.1

Summary: This gene encodes a protein that functions as a negative regulator of NEDD8, a ubiquitin-like protein that conjugates with cullin family members in order to regulate vital biological events. The protein encoded by this gene regulates the NEDD8 conjugation system post-transcriptionally by recruiting NEDD8 and its conjugates to the proteasome for degradation. This protein interacts with the product of the AIPL1 gene, which is associated with Leber congenital amaurosis, an inherited retinopathy, and mutations in that gene can abolish interaction with this protein, which may contribute to the pathogenesis. This protein is also known to accumulate in Lewy bodies in Parkinson's disease and dementia with Lewy bodies, and in glial cytoplasmic inclusions in multiple system atrophy, with this abnormal accumulation being specific to alpha-synucleinopathy lesions. Alternative splicing of this gene results in multiple transcript variants. [provided by RefSeq, Aug 2011]

Protein Families: Druggable Genome

Product images:



Coomassie blue staining of purified NUB1 protein (Cat# [TP308098]). The protein was produced from HEK293T cells transfected with NUB1 cDNA clone (Cat# [RC208098]) using MegaTran 2.0 (Cat# [TT210002]).