

Product datasheet for PH308076

RALA (NM_005402) Human Mass Spec Standard

Product data:

Product Type:	Mass Spec Standards
Description:	RALA MS Standard C13 and N15-labeled recombinant protein (NP_005393)
Species:	Human
Expression Host:	HEK293
Expression cDNA Clone or AA Sequence:	RC208076
Predicted MW:	23.6 kDa
Protein Sequence:	>RC208076 protein sequence Red=Cloning site Green=Tags(s) MAANKPKGQNSLALHKVIMVSGGKGKLSALTLQFMYDEFVEDYEPTKADSYRKKVVLGDGEEVQIDILDTA GQEDYAAIRDNYFRSGEGFLCVFSITEMESFAATADFREQILRVKEDENVPFLLVGNKSDLEDKRQVSVE EAKNRAEQWNVNYVETSAKTRANVDKVFFDLMREIRARKMEDSKEKNGKKRSLAKRIRERCCIL TRTRPLEQKLISEEDLAANDILDYKDDDDKV
Tag:	C-Myc/DDK
Purity:	> 80% as determined by SDS-PAGE and Coomassie blue staining
Concentration:	>0.05 µg/µL as determined by microplate BCA method
Labeling Method:	Labeled with [U- 13C6, 15N4]-L-Arginine and [U- 13C6, 15N2]-L-Lysine
Buffer:	25 mM Tris-HCl, 100 mM glycine, pH 7.3
Storage:	Store at -80°C. Avoid repeated freeze-thaw cycles.
Stability:	Stable for 3 months from receipt of products under proper storage and handling conditions.
RefSeq:	NP_005393
RefSeq Size:	2828
RefSeq ORF:	618
Synonyms:	HINCONS; RAL
Locus ID:	5898
UniProt ID:	P11233



[View online »](#)

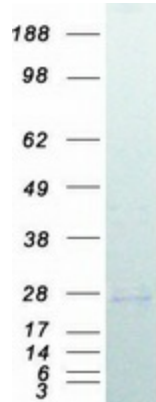
Cytogenetics: 7p14.1

Summary: The product of this gene belongs to the small GTPase superfamily, Ras family of proteins. GTP-binding proteins mediate the transmembrane signaling initiated by the occupancy of certain cell surface receptors. This gene encodes a low molecular mass ras-like GTP-binding protein that shares about 50% similarity with other ras proteins. [provided by RefSeq, Jul 2008]

Protein Families: Druggable Genome

Protein Pathways: Pancreatic cancer, Pathways in cancer

Product images:



Coomassie blue staining of purified RALA protein (Cat# [TP308076]). The protein was produced from HEK293T cells transfected with RALA cDNA clone (Cat# [RC208076]) using MegaTran 2.0 (Cat# [TT210002]).