

## Product datasheet for PH308068

### MRPL43 (NM\_176792) Human Mass Spec Standard

#### Product data:

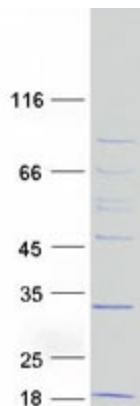
Product Type:	Mass Spec Standards
Description:	MRPL43 MS Standard C13 and N15-labeled recombinant protein (NP_789762)
Species:	Human
Expression Host:	HEK293
Expression cDNA Clone or AA Sequence:	RC208068
Predicted MW:	23.4 kDa
Protein Sequence:	<p>&gt;RC208068 protein sequence</p> <p>Red=Cloning site Green=Tags(s)</p> <p>MTARGTPSRFLASVLHNLGRYVQQLQRLSFSVSRDGASSRGAREFVEREVIDFARRNPGVVIYVNSRPC            CVPRVVAEYLNAGVREESIHCKSVEEISTLVQKLADQSGLDVIRIRKPFHTDNPSIQGQWHPFTNKPTTF            RGLRPREVQDPAPAQDTGLRLSAVAPQILLPGWPDPLPTVDPISSSLTSAPAPMLSAVSCLPIVPALT            TVCSA</p> <p>TRTRPLEQKLISEEDLAANDILDYKDDDDKV</p>
Tag:	C-Myc/DDK
Purity:	> 80% as determined by SDS-PAGE and Coomassie blue staining
Concentration:	>0.05 µg/µL as determined by microplate BCA method
Labeling Method:	Labeled with [U- <sup>13</sup> C <sub>6</sub> , <sup>15</sup> N <sub>4</sub> ]-L-Arginine and [U- <sup>13</sup> C <sub>6</sub> , <sup>15</sup> N <sub>2</sub> ]-L-Lysine
Buffer:	25 mM Tris-HCl, 100 mM glycine, pH 7.3
Storage:	Store at -80°C. Avoid repeated freeze-thaw cycles.
Stability:	Stable for 3 months from receipt of products under proper storage and handling conditions.
RefSeq:	<a href="#">NP_789762</a>
RefSeq Size:	2151
RefSeq ORF:	645
Synonyms:	bMRP36a; L43mt; MRP-L43
Locus ID:	84545
UniProt ID:	<a href="#">Q8N983</a>


[View online »](#)

**Cytogenetics:** 10q24.31

**Summary:** Mammalian mitochondrial ribosomal proteins are encoded by nuclear genes and help in protein synthesis within the mitochondrion. Mitochondrial ribosomes (mitoribosomes) consist of a small 28S subunit and a large 39S subunit. They have an estimated 75% protein to rRNA composition compared to prokaryotic ribosomes, where this ratio is reversed. Another difference between mammalian mitoribosomes and prokaryotic ribosomes is that the latter contain a 5S rRNA. Among different species, the proteins comprising the mitoribosome differ greatly in sequence, and sometimes in biochemical properties, which prevents easy recognition by sequence homology. This gene encodes a 39S subunit protein. This gene and the gene for a semaphorin class 4 protein (SEMA4G) overlap at map location 10q24.31 and are transcribed in opposite directions. Sequence analysis identified multiple transcript variants encoding at least four different protein isoforms. [provided by RefSeq, Jul 2008]

### Product images:



Coomassie blue staining of purified MRPL43 protein (Cat# [TP308068]). The protein was produced from HEK293T cells transfected with MRPL43 cDNA clone (Cat# [RC208068]) using MegaTran 2.0 (Cat# [TT210002]).